

CRSP/COMPUSTAT MERGED DATABASE RELEASE NOTES

JANUARY 2008 MONTHLY/QUARTERLY UPDATE

INTRODUCTION

These release notes accompany the January 2008 monthly/quarterly cut of the CRSP/Compustat Merged Database (CCM). The CCM files are updated monthly based on Compustat's final research cuts and shipped by the tenth trading day after the cut date, either monthly, quarterly or annually. Files are delivered on a single compressed CD-ROM and installed using an InstallShield wizard. Please refer to our website for CRSPAccess Release Notes for full product information and for Documents and Guides for all CRSP products at:

<http://www.crsp.chicagosb.edu/support/documentation>

CCM DATA CREATED FROM XPRESSFEED INPUTS

CRSP is now creating the CRSP/Compustat Merged database using new Xpressfeed inputs from Compustat. In this first phase of the transition, the format of the CCM databases is unchanged (CST) and it will continue to work with your existing tools. Several issues that were identified in the previous months have been addressed.

ABOUT THE JANUARY 2008 CRSP/COMPUSTAT MERGED DATABASE:

The Compustat cut date for this release is January 17, 2008. The database is shipped in its entirety with historical edits for restatements and corrections for each release.

The CD label for the CCM database is CPZ.

CPZ: CRSP Stock and Indices with Compustat data. PDE market data is for listed and research companies.

The database is delivered and supported on three platforms: Windows, Linux and Solaris. It has been tested on

CRSPAccess 2.97 and is supported on CRSPAccess versions 2.91 and higher.

PARAMETERS:

- The number of CRSP Securities in the CPZ database is 23,722.
- The number of GVKEYs in the CPZ database is 32,995.
- The number of links in the CPZ database is 54,886.
- Database size is approximately 2.32 Gb.

CALENDARS

The CCM database utilizes the CRSP stock calendars to align properly with CRSP data. Data in the CRSP daily Stock (and Indices) file use daily and annual calendars. Data in the monthly files use monthly, quarterly and annual calendars.

Calendar	Date Range	Date Index Range
Daily trading calendar	19251231-20080111	1-21772
Month-end trading calendar	19251231-20081231	1-985
Year-end trading calendar	19251231-20081231	1-84
Quarter-end trading calendar	19251231-20081231	1-333
Weekly trading calendar	19260102-20071231	1-4279

DECEMBER NOTES

12-MONTH MOVING WINDOW EARNINGS PER SHARE CALCULATIONS

Currency translations of 12-month moving window earnings per share items were previously converted directly from the native currency 12-month moving window value provided by Compustat. The calculation for these items was corrected to use year-to-date and quarterly components, each of which is converted to the proper currency independently before

CONTINUED >>



CENTER FOR RESEARCH IN SECURITY PRICES

A Research Center at ChicagoGSB

they are summed. These items are now calculated from components even if currency translation is not needed, which results in increased coverage.

INDEX FUNDAMENTAL PERIOD DESCRIPTOR ITEMS NOW POPULATED

Four index fundamental period descriptor items in the November 2007 cut of the CRSP/Compustat database that were not populated are now populated in the December 2007 cut. The old variable names in the index fundamental data period details structure are pctrep and numcomp. Their new corresponding mnemonics in the Xpressfeed inputs are SPEQA/SPEQQ, and SPNOA/SPNOQ.

NEW ISSUE MARKER USED

Security-based annual and quarterly fundamental data items now use the historical month primary issue marker instead of the company primary issue marker to identify the data source. While this reflects a change for fundamental data items, note that the PDE security data source remains unchanged and is still derived from the monthly FTP USPDE and USPDE Research files created from Compustat.

NOVEMBER NOTES

HEADER HISTORY CHANGES

In the October cut of the database, the history records for most GVKEYs were generated from FTP versions of the PDE data files. Header history records in this and future data cuts are now coming from the Xpressfeed inputs. Since two fields in the header file, FILE and DUP, are not available in the Xpressfeed data, changes to missing values of zero should be disregarded when determining if a new header history record is needed.

NEWLY POPULATED RECORDS

Non-Standard Pro Forma, Pre FASB, Pre-Divestiture, and Amended records include data in the November 2007 cut of the database. Compustat plans to remove these supplemental GVKEYs and move the data into extra records under the primary GVKEY of the companies in Xpressfeed. When the

supplemental GVKEYs are removed the data will be unavailable in CST format databases.

Annual and quarterly items representing price data for indices that were missing in the October release are now populated. Indices populated with these price data items data are those that have annual and quarterly fundamental data. Monthly data in the PDE files for indices were available last month and remain populated.

DROPPED GVKEYS

79 GVKEYs have been dropped in the November update. These represented securities that did not follow our requirement of having Xpressfeed fundamental data with a primary security marked. At least one GVKEY, 1945, had Xpressfeed fundamental data in October but was dropped by Compustat in November.

MORE INFORMATION

Compustat data definitions and additional information about Xpressfeed may be accessed directly from Compustat's website at www.compustatresources.com.

DATA EDITS

JANUARY 2008 DATA EDITS

GROUP EDITS

Link Merge Problems: Researched and edited all GVKEYs that had extra NR links that resulted from improper database merges since 200709. Extended the LC link end date in most cases and deleted the incorrect NR link.

INDIVIDUAL EDITS

GVKEY 29930 (MOTORCAR PARTS OF AMER INC)

OLD:

LINKDT	LINKENDDT	PERMNO	PERMCO	LINKTYPE	LINKFLAG
19920401	19940322	0	0	NU	XXX
19940323	19990730	80341	12938	LU	BBB
19990731	99999999	0	0	NU	XXX

NEW:

LINKDT	LINKENDDT	PERMNO	PERMCO	LINKTYPE	LINKFLAG
19920401	19940322	0	0	NU	XXX
19940323	19990730	80341	12938	LU	BBB
19990731	20070418	0	0	NU	XXX
20070419	20071202	0	0	NR	XXX
20071203	99999999	80341	12938	LC	BBB

GVKEY 122163 (WESTERN GOLDFIELDS INC)

OLD:

LINKDT	LINKENDDT	PERMNO	PERMCO	LINKTYPE	LINKFLAG
20051117	99999999	0	0	NR	XXX

NEW:

LINKDT	LINKENDDT	PERMNO	PERMCO	LINKTYPE	LINKFLAG
20051117	20071107	0	0	NR	XXX
20071108	99999999	92425	52851	LC	BBB

GVKEY 64539 (CORGI INTERNATIONAL LTD)

OLD:

LINKDT	LINKENDDT	PERMNO	PERMCO	LINKTYPE	LINKFLAG
19940401	19970303	0	0	NR	XXX
19970304	20070418	84638	15367	LC	BBB
20070419	20071109	84638	15367	LN	BBB

NEW:

LINKDT	LINKENDDT	PERMNO	PERMCO	LINKTYPE	LINKFLAG
19970304	20061220	84638	15367	LC	BBB

GVKEY 8488 (APPLERA CORP-APPLIED BIOSYS)

OLD:

LINKDT	LINKENDDT	PERMNO	PERMCO	LINKTYPE	LINKFLAG
19490801	19601229	0	0	NU	XXX
19601230	99999999	27713	21387	LC	BBB

NEW:

LINKDT	LINKENDDT	PERMNO	PERMCO	LINKTYPE	LINKFLAG
19490801	19601212	0	0	NR	XXX
19601213	99999999	27713	21387	LC	BBB

GVKEY 127234 (APPLERA CORP-CELERA GROUP)

OLD:

LINKDT	LINKENDDT	PERMNO	PERMCO	LINKTYPE	LINKFLAG
19990428	99999999	86806	21387	LS	BBB

NEW:

LINKDT	LINKENDDT	PERMNO	PERMCO	LINKTYPE	LINKFLAG
19990506	99999999	86806	21387	LS	BBB

GVKEY 1651 (ANDREW CORP)

OLD:

LINKDT	LINKENDDT	PERMNO	PERMCO	LINKTYPE	LINKFLAG
19781001	19800618	0	0	NU	XXX
19800619	99999999	14323	272	LU	BBB

NEW:

LINKDT	LINKENDDT	PERMNO	PERMCO	LINKTYPE	LINKFLAG
19781001	19800618	0	0	NU	XXX
19800619	20070418	14323	272	LU	BBB
20070419	20071227	14323	272	LC	BBB
20071228	99999999	0	0	NR	XXX

GVKEY 65142 (COMMSCOPE INC)

OLD:

LINKDT	LINKENDDT	PERMNO	PERMCO	LINKTYPE	LINKFLAG
19920101	19970723	0	0	NU	XXX
19970724	99999999	85231	32028	LU	BBB

NEW:

LINKDT	LINKENDDT	PERMNO	PERMCO	LINKTYPE	LINKFLAG
19920101	19970723	0	0	NU	XXX
19970724	20070418	85231	32028	LU	BBB
20070419	99999999	85231	32028	LC	BBB

GVKEY 10726 (TRIBUNE CO)

OLD:

LINKDT	LINKENDDT	PERMNO	PERMCO	LINKTYPE	LINKFLAG
19830101	19831011	0	0	NU	XXX
19831012	99999999	65787	21782	LU	BBB

NEW:

LINKDT	LINKENDDT	PERMNO	PERMCO	LINKTYPE	LINKFLAG
19830101	19831011	0	0	NU	XXX
19831012	20070418	65787	21782	LU	BBB
20070419	20071220	65787	21782	LC	BBB
20071221	99999999	0	0	NR	XXX

GVKEY 15110 (LYONDELL CHEMICAL CO)

OLD:

LINKDT	LINKENDDT	PERMNO	PERMCO	LINKTYPE	LINKFLAG
19880101	19890118	0	0	NU	XXX
19890119	99999999	75444	22011	LU	BBB

NEW:

LINKDT	LINKENDDT	PERMNO	PERMCO	LINKTYPE	LINKFLAG
19880101	19890118	0	0	NU	XXX
19890119	20070418	75444	22011	LU	BBB
20070419	20071220	75444	22011	LC	BBB
20071221	99999999	0	0	NR	XXX

GVKEY 4222 (EDO CORP)

OLD:

LINKDT	LINKENDDT	PERMNO	PERMCO	LINKTYPE	LINKFLAG
19600101	19620701	0	0	NU	XXX
19620702	99999999	31552	20633	LU	BBB

NEW:

LINKDT	LINKENDDT	PERMNO	PERMCO	LINKTYPE	LINKFLAG
19600101	19620701	0	0	NU	XXX
19620702	20070418	31552	20633	LU	BBB
20070419	20071220	31552	20633	LC	BBB
20071221	99999999	0	0	NR	XXX

GVKEY 5860 (ITT CORP)

OLD:

LINKDT	LINKENDDT	PERMNO	PERMCO	LINKTYPE	LINKFLAG
19500101	99999999	12570	20964	LU	BBB

NEW:

LINKDT	LINKENDDT	PERMNO	PERMCO	LINKTYPE	LINKFLAG
19500101	20070418	12570	20964	LU	BBB
20070419	99999999	12570	20964	LC	BBB

GVKEY 2537 (C-COR INC)

OLD:

LINKDT	LINKENDDT	PERMNO	PERMCO	LINKTYPE	LINKFLAG
19800701	19810301	0	0	NU	XXX
19810302	20070418	20125	787	LU	BBB
20070419	99999999	20125	787	LC	BBB

NEW:

LINKDT	LINKENDDT	PERMNO	PERMCO	LINKTYPE	LINKFLAG
19800701	19810301	0	0	NR	XXX
19810302	20071214	20125	787	LC	BBB
20071215	99999999	0	0	NR	XXX

GVKEY 28853 (ARRIS GROUP INC)

OLD:

LINKDT	LINKENDDT	PERMNO	PERMCO	LINKTYPE	LINKFLAG
19920101	19930916	0	0	NU	XXX
19930917	99999999	79564	12407	LU	BBB

NEW:

LINKDT	LINKENDDT	PERMNO	PERMCO	LINKTYPE	LINKFLAG
19920101	19930916	0	0	NU	XXX
19930917	20070418	79564	12407	LU	BBB
20070419	99999999	79564	12407	LC	BBB

GVKEY 4062 (DOW JONES & CO INC)

OLD:

LINKDT	LINKENDDT	PERMNO	PERMCO	LINKTYPE	LINKFLAG
19630101	19690101	0	0	NU	XXX
19690102	99999999	58990	1366	LU	BBB

NEW:

LINKDT	LINKENDDT	PERMNO	PERMCO	LINKTYPE	LINKFLAG
19630101	19690101	0	0	NU	XXX
19690102	20070418	58990	1366	LU	BBB
20070419	20071213	58990	1366	LC	BBB
20071214	99999999	0	0	NR	XXX

GVKEY 61355 (CHECKFREE CORP)

OLD:

LINKDT	LINKENDDT	PERMNO	PERMCO	LINKTYPE	LINKFLAG
19940101	19950927	0	0	NR	XXX
19950928	20071205	82255	13998	LC	BBB

NEW:

LINKDT	LINKENDDT	PERMNO	PERMCO	LINKTYPE	LINKFLAG
19940101	19950927	0	0	NR	XXX
19950928	20071203	82255	13998	LC	BBB
20071204	99999999	0	0	NR	XXX

GVKEY 10150 (SEQUA CORP -CL A)

OLD:

LINKDT	LINKENDDT	PERMNO	PERMCO	LINKTYPE	LINKFLAG
19500101	19870111	0	0	NU	XXX
19870112	99999999	72733	21597	LC	BBB

NEW:

LINKDT	LINKENDDT	PERMNO	PERMCO	LINKTYPE	LINKFLAG
19500101	19870111	0	0	NU	XXX
19870112	20071203	72733	21597	LC	BBB
20071204	99999999	0	0	NR	XXX

GVKEY 1243 (ALCAN INC)

OLD:

LINKDT	LINKENDDT	PERMNO	PERMCO	LINKTYPE	LINKFLAG
19500531	20070418	24264	20039	LU	BBB
20070419	20071115	24264	20039	LC	BBB

NEW:

LINKDT	LINKENDDT	PERMNO	PERMCO	LINKTYPE	LINKFLAG
19500531	20071114	24264	20039	LC	BBB
20071115	99999999	0	0	NR	XXX

GVKEY 1902 (CARRINGTON LABORATORIES INC)

OLD:

LINKDT	LINKENDDT	PERMNO	PERMCO	LINKTYPE	LINKFLAG
19821130	19830810	0	0	NU	XXX
19830811	20070418	15991	6282	LU	BBB
20070419	20070815	15991	6282	LC	BBB
20070816	99999999	0	0	NR	XXX

NEW:

LINKDT	LINKENDDT	PERMNO	PERMCO	LINKTYPE	LINKFLAG
19821130	19830810	0	0	NR	XXX
19830811	20070815	15991	6282	LC	BBB
20070816	99999999	0	0	NR	XXX

GVKEY 2085 (BAUSCH & LOMB INC)

OLD:

LINKDT	LINKENDT	PERMNO	PERMCO	LINKTYPE	LINKFLAG
19500101	19580330	0	0	NU	XXX
19580331	20070418	26518	20276	LU	BBB
20070419	20071026	26518	20276	LC	BBB
20071027	99999999	0	0	NR	XXX

NEW:

LINKDT	LINKENDT	PERMNO	PERMCO	LINKTYPE	LINKFLAG
19500101	19580323	0	0	NR	XXX
19580324	20071026	26518	20276	LC	BBB
20071027	99999999	0	0	NR	XXX

DECEMBER 2007 DATA EDITS**GVKEY 61183 (EVOLVE ONE INC)**

OLD:

LINKDT	LINKENDT	PERMNO	PERMCO	LINKTYPE	LINKFLAG
20010719	20070923	0	0	NR	XXX
20070924	99999999	92266	52749	LC	BBB

NEW:

LINKDT	LINKENDT	PERMNO	PERMCO	LINKTYPE	LINKFLAG
20010719	99999999	0	0	NR	XXX

GVKEY 18152 (CITIZENS FINANCIAL CORP/KY)

OLD:

LINKDT	LINKENDT	PERMNO	PERMCO	LINKTYPE	LINKFLAG
19910101	19930207	0	0	NU	XXX
19930208	99999999	78922	11941	LU	BBB

NEW:

LINKDT	LINKENDT	PERMNO	PERMCO	LINKTYPE	LINKFLAG
19910101	19930207	0	0	NU	XXX
19930208	20070418	78922	11941	LU	BBB
20070419	20071113	78922	11941	LC	BBB
20071114	99999999	0	0	NR	XXX

GVKEY 20247 (CENTRAL SUN MINING INC)

OLD:

LINKDT	LINKENDDT	PERMNO	PERMCO	LINKTYPE	LINKFLAG
19940101	20050222	0	0	NR	XXX
20050223	99999999	90557	46155	LC	BBB

NEW:

LINKDT	LINKENDDT	PERMNO	PERMCO	LINKTYPE	LINKFLAG
19940101	20050222	0	0	NR	XXX
20050223	99999999	90557	46155	LC	BBB

GVKEY 22177 (VELOCITY EXPRESS CORP)

OLD:

LINKDT	LINKENDDT	PERMNO	PERMCO	LINKTYPE	LINKFLAG
19940701	19960528	0	0	NU	XXX
19960529	99999999	83566	14670	LU	BBB

NEW:

LINKDT	LINKENDDT	PERMNO	PERMCO	LINKTYPE	LINKFLAG
19940701	19960528	0	0	NU	XXX
19960529	20070418	83566	14670	LU	BBB
20070419	99999999	83566	14670	LC	BBB

GVKEY 28947 (NATIONAL R V HOLDINGS INC)

OLD:

LINKDT	LINKENDDT	PERMNO	PERMCO	LINKTYPE	LINKFLAG
19920601	19930929	0	0	NR	XXX
19930930	99999999	79613	12452	LC	BBB

NEW:

LINKDT	LINKENDDT	PERMNO	PERMCO	LINKTYPE	LINKFLAG
19920601	19930929	0	0	NR	XXX
19930930	20071023	79613	12452	LC	BBB
20071024	99999999	0	0	NR	XXX

GVKEY 9311 (SBE INC)

OLD:

LINKDT	LINKENDDT	PERMNO	PERMCO	LINKTYPE	LINKFLAG
19741101	19760108	0	0	NR	XXX
19760109	20070813	68145	3984	LC	BBB

NEW:

LINKDT	LINKENDDT	PERMNO	PERMCO	LINKTYPE	LINKFLAG
19741101	19760108	0	0	NR	XXX
19760109	20070810	68145	3984	LC	BBB

GVKEY 16996 (PXRE GROUP LTD)

OLD:

LINKDT	LINKENDDT	PERMNO	PERMCO	LINKTYPE	LINKFLAG
19860101	19870324	0	0	NR	XXX
19870325	20070807	11203	9053	LC	BBB

NEW:

LINKDT	LINKENDDT	PERMNO	PERMCO	LINKTYPE	LINKFLAG
19860101	19870324	0	0	NR	XXX
19870325	20070806	11203	9053	LC	BBB

GVKEY 141241 (CATALYTICA ENERGY SYS INC)

OLD:

LINKDT	LINKENDDT	PERMNO	PERMCO	LINKTYPE	LINKFLAG
20001229	20071001	88830	41055	LC	BBB

NEW:

LINKDT	LINKENDDT	PERMNO	PERMCO	LINKTYPE	LINKFLAG
20001229	20070928	88830	41055	LC	BBB

GVKEY 144235 (INTAC INTERNATIONAL)

OLD:

LINKDT	LINKENDDT	PERMNO	PERMCO	LINKTYPE	LINKFLAG
20010101	20030604	0	0	NR	XXX
20030605	20071101	89756	44117	LC	BBB

NEW:

LINKDT	LINKENDDT	PERMNO	PERMCO	LINKTYPE	LINKFLAG
20010101	20030604	0	0	NR	XXX
20030605	20071002	89756	44117	LC	BBB

GVKEY 165698 (DIGITAL MUSIC GROUP INC-OLD)

OLD:

LINKDT	LINKENDT	PERMNO	PERMCO	LINKTYPE	LINKFLAG
20040101	20060201	0	0	NR	XXX
20060202	99999999	91091	50294	LC	BBB

NEW:

LINKDT	LINKENDT	PERMNO	PERMCO	LINKTYPE	LINKFLAG
20040101	20060201	0	0	NR	XXX
20060202	20071113	91091	50294	LC	BBB

GVKEY 15598 (AEGON NV)

OLD:

LINKDT	LINKENDT	PERMNO	PERMCO	LINKTYPE	LINKFLAG
19830101	19850627	0	0	NU	XXX
19850628	20070418	85172	7622	LU	BBB
20070419	99999999	85172	7622	LN	BBB

NEW:

LINKDT	LINKENDT	PERMNO	PERMCO	LINKTYPE	LINKFLAG
19830101	19850627	0	0	NU	XXX
19850628	99999999	85172	7622	LC	BBB

GVKEY 1318 (ALLTEL CORP)

OLD:

LINKDT	LINKENDT	PERMNO	PERMCO	LINKTYPE	LINKFLAG
19610101	19650117	0	0	NR	XXX
19650118	99999999	41443	20057	LC	BBB

NEW:

LINKDT	LINKENDT	PERMNO	PERMCO	LINKTYPE	LINKFLAG
19610101	19650117	0	0	NR	XXX
19650118	20071116	41443	20057	LC	BBB
20071117	99999999	0	0	NR	XXX

GVKEY 3480 (CERIDIAN CORP)

OLD:

LINKDT	LINKENDDT	PERMNO	PERMCO	LINKTYPE	LINKFLAG
19590701	19630305	0	0	NR	XXX
19630306	99999999	38914	20514	LC	BBB

NEW:

LINKDT	LINKENDDT	PERMNO	PERMCO	LINKTYPE	LINKFLAG
19590701	19630305	0	0	NR	XXX
19630306	20071108	38914	20514	LC	BBB
20071109	99999999	0	0	NR	XXX

GVKEY 147644 (KYPHON INC)

OLD:

LINKDT	LINKENDDT	PERMNO	PERMCO	LINKTYPE	LINKFLAG
20020430	20071105	89390	43143	LC	BBB

NEW:

LINKDT	LINKENDDT	PERMNO	PERMCO	LINKTYPE	LINKFLAG
20020430	20071102	89390	43143	LC	BBB
20071103	99999999	0	0	NR	XXX

GVKEY 7228 (MEDTRONIC INC)

OLD:

LINKDT	LINKENDDT	PERMNO	PERMCO	LINKTYPE	LINKFLAG
19620501	19721213	0	0	NU	XXX
19721214	99999999	60097	2850	LU	BBB

NEW:

LINKDT	LINKENDDT	PERMNO	PERMCO	LINKTYPE	LINKFLAG
19620501	19721213	0	0	NU	XXX
19721214	20070418	60097	2850	LU	BBB
20070419	99999999	60097	2850	LC	BBB

GVKEY 63663 (AUTHORIZE.NET HOLDINGS INC)

OLD:

LINKDT	LINKENDDT	PERMNO	PERMCO	LINKTYPE	LINKFLAG
19941001	19960926	0	0	NU	XXX
19960927	20071102	83946	14984	LU	BBB

NEW:

LINKDT	LINKENDDT	PERMNO	PERMCO	LINKTYPE	LINKFLAG
19941001	19960926	0	0	NR	XXX
19960927	20071101	83946	14984	LC	BBB
20071102	99999999	0	0	NR	XXX

GVKEY 121656 (CYBERSOURCE CORP)

OLD:

LINKDT	LINKENDDT	PERMNO	PERMCO	LINKTYPE	LINKFLAG
19990624	99999999	86958	16605	LU	BBB

NEW:

LINKDT	LINKENDDT	PERMNO	PERMCO	LINKTYPE	LINKFLAG
19990624	20070418	86958	16605	LU	BBB
20070419	99999999	86958	16605	LC	BBB

GVKEY 25000 (POLYMEDICA CORP)

OLD:

LINKDT	LINKENDDT	PERMNO	PERMCO	LINKTYPE	LINKFLAG
19900401	19920304	0	0	NU	XXX
19920305	20071101	77392	11382	LU	BBB

NEW:

LINKDT	LINKENDDT	PERMNO	PERMCO	LINKTYPE	LINKFLAG
19900401	19920304	0	0	NR	XXX
19920305	20071031	77392	11382	LC	BBB
20071101	99999999	0	0	NR	XXX

GVKEY 122315 (BIOPURE CORP)

OLD:

LINKDT	LINKENDDT	PERMNO	PERMCO	LINKTYPE	LINKFLAG
19990825	20070418	87057	16691	LU	BBB
20070419	99999999	87075	16691	LC	XXX

NEW:

LINKDT	LINKENDDT	PERMNO	PERMCO	LINKTYPE	LINKFLAG
19990825	20070418	87057	16691	LU	BBB
20070419	99999999	87057	16691	LC	XXX

GVKEY 2085 (BAUSCH & LOMB INC)

OLD:

LINKDT	LINKENDDT	PERMNO	PERMCO	LINKTYPE	LINKFLAG
19500101	19580330	0	0	NU	XXX
19580331	99999999	26518	20276	LU	BBB

NEW:

LINKDT	LINKENDDT	PERMNO	PERMCO	LINKTYPE	LINKFLAG
19500101	19580330	0	0	NU	XXX
19580331	20070418	26518	20276	LU	BBB
20070419	20071026	26518	20276	LC	BBB
20071027	99999999	0	0	NR	XXX

GVKEY 139662 (AVAYA INC)

OLD:

LINKDT	LINKENDDT	PERMNO	PERMCO	LINKTYPE	LINKFLAG
20000918	99999999	88587	39130	LC	BBB

NEW:

LINKDT	LINKENDDT	PERMNO	PERMCO	LINKTYPE	LINKFLAG
20000918	20071025	88587	39130	LC	BBB
20071026	99999999	0	0	NR	XXX

GVKEY 5643 (HILTON HOTELS CORP)

OLD:

LINKDT	LINKENDDT	PERMNO	PERMCO	LINKTYPE	LINKFLAG
19500101	99999999	23309	20915	LU	BBB

NEW:

LINKDT	LINKENDDT	PERMNO	PERMCO	LINKTYPE	LINKFLAG
19500101	20070418	23309	20915	LU	BBB
20070419	20071024	23309	20915	LC	BBB

GVKEY 62336 (CYTYC CORP)

OLD:

LINKDT	LINKENDDT	PERMNO	PERMCO	LINKTYPE	LINKFLAG
19950101	19960307	0	0	NU	XXX
19960308	99999999	83251	14414	LU	BBB

NEW:

LINKDT	LINKENDDT	PERMNO	PERMCO	LINKTYPE	LINKFLAG
19950101	19960307	0	0	NU	XXX
19960308	20070418	83251	14414	LU	BBB
20070419	20071022	83251	14414	LC	BBB

GVKEY 20904 (HOLOGIC INC)

OLD:

LINKDT	LINKENDDT	PERMNO	PERMCO	LINKTYPE	LINKFLAG
19890929	19900228	0	0	NU	XXX
19900301	99999999	76095	10504	LU	BBB

NEW:

LINKDT	LINKENDDT	PERMNO	PERMCO	LINKTYPE	LINKFLAG
19890929	19900228	0	0	NU	XXX
19900301	20070418	76095	10504	LU	BBB
20070419	99999999	76095	10504	LC	BBB

GVKEY 5968 (RYERSON INC)

OLD:

LINKDT	LINKENDDT	PERMNO	PERMCO	LINKTYPE	LINKFLAG
19500101	99999999	12458	20978	LC	BBB

NEW:

LINKDT	LINKENDDT	PERMNO	PERMCO	LINKTYPE	LINKFLAG
19500101	20071018	12458	20978	LC	BBB
20071019	99999999	0	0	NR	XXX

GVKEY 63102 (KEYSTONE AUTOMOTIVE INDS INC)

OLD:

LINKDT	LINKENDDT	PERMNO	PERMCO	LINKTYPE	LINKFLAG
19950401	19960620	0	0	NU	XXX
19960621	99999999	83669	14745	LU	BBB

NEW:

LINKDT	LINKENDDT	PERMNO	PERMCO	LINKTYPE	LINKFLAG
19950401	19960620	0	0	NU	XXX
19960621	20070418	83669	14745	LU	BBB
20070419	20071012	83669	14745	LC	BBB
20071013	99999999	0	0	NR	XXX

GVKEY 28320 (CDW CORP)

OLD:

LINKDT	LINKENDDT	PERMNO	PERMCO	LINKTYPE	LINKFLAG
19920101	19930526	0	0	NU	XXX
19930527	99999999	79157	12165	LU	BBB

NEW:

LINKDT	LINKENDDT	PERMNO	PERMCO	LINKTYPE	LINKFLAG
19920101	19930526	0	0	NU	XXX
19930527	20070418	79157	12165	LU	BBB
20070419	20071012	79157	12165	LC	BBB
20071013	99999999	0	0	NR	XXX

GVKEY 10507 (TXU CORP)

OLD:

LINKDT	LINKENDDT	PERMNO	PERMCO	LINKTYPE	LINKFLAG
19510228	20071011	24563	21740	LU	BBB

NEW:

LINKDT	LINKENDDT	PERMNO	PERMCO	LINKTYPE	LINKFLAG
19510228	20071010	24563	21740	LC	BBB
20071011	99999999	0	0	NR	XXX

GVKEY 154335 (FIRST TRUST VALUE LN 100 ETF)

OLD:

LINKDT	LINKENDDT	PERMNO	PERMCO	LINKTYPE	LINKFLAG
20030613	99999999	89765	44125	LC	BBB

NEW:

LINKDT	LINKENDDT	PERMNO	PERMCO	LINKTYPE	LINKFLAG
20030613	20070617	89765	44125	LC	BBB
20070618	99999999	89765	44125	LS	XXX

GVKEY 64486 (GUITAR CENTER INC)

OLD:

LINKDT	LINKENDDT	PERMNO	PERMCO	LINKTYPE	LINKFLAG
19950101	19970313	0	0	NU	XXX
19970314	20071010	84616	15390	LU	BBB

NEW:

LINKDT	LINKENDDT	PERMNO	PERMCO	LINKTYPE	LINKFLAG
19950101	19970313	0	0	NU	XXX
19970314	20071009	84616	15390	LC	BBB
20071010	99999999	0	0	NR	XXX

GVKEY 8787 (ARCHSTONE-SMITH TRUST)

OLD:

LINKDT	LINKENDDT	PERMNO	PERMCO	LINKTYPE	LINKFLAG
19740101	20071008	64451	3720	LU	BBB

NEW:

LINKDT	LINKENDDT	PERMNO	PERMCO	LINKTYPE	LINKFLAG
19740101	20071005	64451	3720	LC	BBB
20071006	99999999	0	0	NR	XXX

GVKEY 25099 (CATALINA MARKETING CORP)

OLD:

LINKDT	LINKENDDT	PERMNO	PERMCO	LINKTYPE	LINKFLAG
19900401	19920326	0	0	NU	XXX
19920327	20071002	77472	29450	LU	BBB

NEW:

LINKDT	LINKENDDT	PERMNO	PERMCO	LINKTYPE	LINKFLAG
19900401	19920326	0	0	NU	XXX
19920327	20071001	77472	29450	LC	BBB
20071002	99999999	0	0	NR	XXX

GVKEY 25111 (RARE HOSPITALITY INTL INC)

OLD:

LINKDT	LINKENDDT	PERMNO	PERMCO	LINKTYPE	LINKFLAG
19910101	19920330	0	0	NU	XXX
19920331	20071002	77448	11442	LU	BBB

NEW:

LINKDT	LINKENDDT	PERMNO	PERMCO	LINKTYPE	LINKFLAG
19910101	19920330	0	0	NU	XXX
19920331	20071001	77448	11442	LC	BBB
20071002	99999999	0	0	NR	XXX

GVKEY 31846 (DARDEN RESTAURANTS INC)

OLD:

LINKDT	LINKENDDT	PERMNO	PERMCO	LINKTYPE	LINKFLAG
19900601	19950508	0	0	NU	XXX
19950509	99999999	81655	30886	LU	BBB

NEW:

LINKDT	LINKENDDT	PERMNO	PERMCO	LINKTYPE	LINKFLAG
19900601	19950508	0	0	NU	XXX
19950509	20070418	81655	30886	LU	BBB
20070419	99999999	81655	30886	LC	BBB

GVKEY 17110 (SOLETRON CORP)

OLD:

LINKDT	LINKENDDT	PERMNO	PERMCO	LINKTYPE	LINKFLAG
19880901	19891114	0	0	NU	XXX
19891115	20071002	75857	10371	LU	BBB

NEW:

LINKDT	LINKENDDT	PERMNO	PERMCO	LINKTYPE	LINKFLAG
19880901	19891114	0	0	NU	XXX
19891115	20071001	75857	10371	LC	BBB
20071002	99999999	0	0	NR	XXX

GVKEY 30170 (FLEXTRONICS INTERNATIONAL)

OLD:

LINKDT	LINKENDDT	PERMNO	PERMCO	LINKTYPE	LINKFLAG
19920401	19940317	0	0	NU	XXX
19940318	99999999	80329	12930	LU	BBB

NEW:

LINKDT	LINKENDDT	PERMNO	PERMCO	LINKTYPE	LINKFLAG
19920401	19940317	0	0	NU	XXX
19940318	20070418	80329	12930	LU	BBB
20070419	99999999	80329	12930	LC	BBB

GVKEY 4230 (EDWARDS (A G) INC)

OLD:

LINKDT	LINKENDDT	PERMNO	PERMCO	LINKTYPE	LINKFLAG
19710301	19720321	0	0	NR	XXX
19720322	20071001	54391	20634	LC	BBB

NEW:

LINKDT	LINKENDDT	PERMNO	PERMCO	LINKTYPE	LINKFLAG
19710301	19720321	0	0	NR	XXX
19720322	20070928	54391	20634	LC	BBB
20070929	99999999	0	0	NR	XXX

GVKEY 4739 (WACHOVIA CORP)

OLD:

LINKDT	LINKENDDT	PERMNO	PERMCO	LINKTYPE	LINKFLAG
19630101	19721213	0	0	NU	XXX
19721214	99999999	36469	1869	LU	BBB

NEW:

LINKDT	LINKENDDT	PERMNO	PERMCO	LINKTYPE	LINKFLAG
19630101	19721213	0	0	NU	XXX
19721214	20070418	36469	1869	LU	BBB
20070419	99999999	36469	1869	LC	BBB

GVKEY 28078 (NEOWARE INC)

OLD:

LINKDT	LINKENDDT	PERMNO	PERMCO	LINKTYPE	LINKFLAG
19920101	19930609	0	0	NU	XXX
19930610	20071001	81491	13595	LU	BBB

NEW:

LINKDT	LINKENDDT	PERMNO	PERMCO	LINKTYPE	LINKFLAG
19920101	19930609	0	0	NU	XXX
19930610	20070928	81491	13595	LC	BBB
20070929	99999999	0	0	NR	XXX

GVKEY 5606 (HEWLETT-PACKARD CO)

OLD:

LINKDT	LINKENDDT	PERMNO	PERMCO	LINKTYPE	LINKFLAG
19491101	19610329	0	0	NU	XXX
19610330	99999999	27828	20908	LU	BBB

NEW:

LINKDT	LINKENDDT	PERMNO	PERMCO	LINKTYPE	LINKFLAG
19491101	19610329	0	0	NU	XXX
19610330	20070418	27828	20908	LU	BBB
20070419	99999999	27828	20908	LC	BBB

GVKEY 61679 (GREATER BAY BANCORP)

OLD:

LINKDT	LINKENDDT	PERMNO	PERMCO	LINKTYPE	LINKFLAG
19940101	19960908	0	0	NU	XXX
19960909	20071001	83974	14946	LU	BBB

NEW:

LINKDT	LINKENDDT	PERMNO	PERMCO	LINKTYPE	LINKFLAG
19940101	19960908	0	0	NU	XXX
19960909	20070928	83974	14946	LC	BBB
20070929	99999999	0	0	NR	XXX

GVKEY 8007 (WELLS FARGO & CO)

OLD:

LINKDT	LINKENDDT	PERMNO	PERMCO	LINKTYPE	LINKFLAG
19580101	19621209	0	0	NU	XXX
19621210	99999999	38703	21305	LU	BBB

NEW:

LINKDT	LINKENDDT	PERMNO	PERMCO	LINKTYPE	LINKFLAG
19580101	19621209	0	0	NU	XXX
19621210	20070418	38703	21305	LU	BBB
20070419	99999999	38703	21305	LC	BBB

GVKEY 14470 (PLAYTEX PRODUCTS INC)

OLD:

LINKDT	LINKENDDT	PERMNO	PERMCO	LINKTYPE	LINKFLAG
19870101	19940126	0	0	NU	XXX
19940127	20071001	80186	30107	LU	BBB

NEW:

LINKDT	LINKENDDT	PERMNO	PERMCO	LINKTYPE	LINKFLAG
19870101	19940126	0	0	NU	XXX
19940127	20070928	80186	30107	LC	BBB
20070929	99999999	0	0	NR	XXX

GVKEY 1902 (CARRINGTON LABORATORIES INC)

OLD:

LINKDT	LINKENDDT	PERMNO	PERMCO	LINKTYPE	LINKFLAG
19821130	19830810	0	0	NU	XXX
19830811	99999999	15991	6282	LU	BBB

NEW:

LINKDT	LINKENDDT	PERMNO	PERMCO	LINKTYPE	LINKFLAG
19821130	19830810	0	0	NU	XXX
19830811	20070418	15991	6282	LU	BBB
20070419	20070815	15991	6282	LC	BBB
20070816	99999999	0	0	NR	XXX

DATA INSTALLATION

Instructions and screen shots for installation are written for Windows. Differences related to Linux and Sun are noted.

WINDOWS:

To install data, insert your CD into the drive and from the Start Menu, select Run `d:\setupwin32.exe`. Click OK.

SUN SOLARIS:

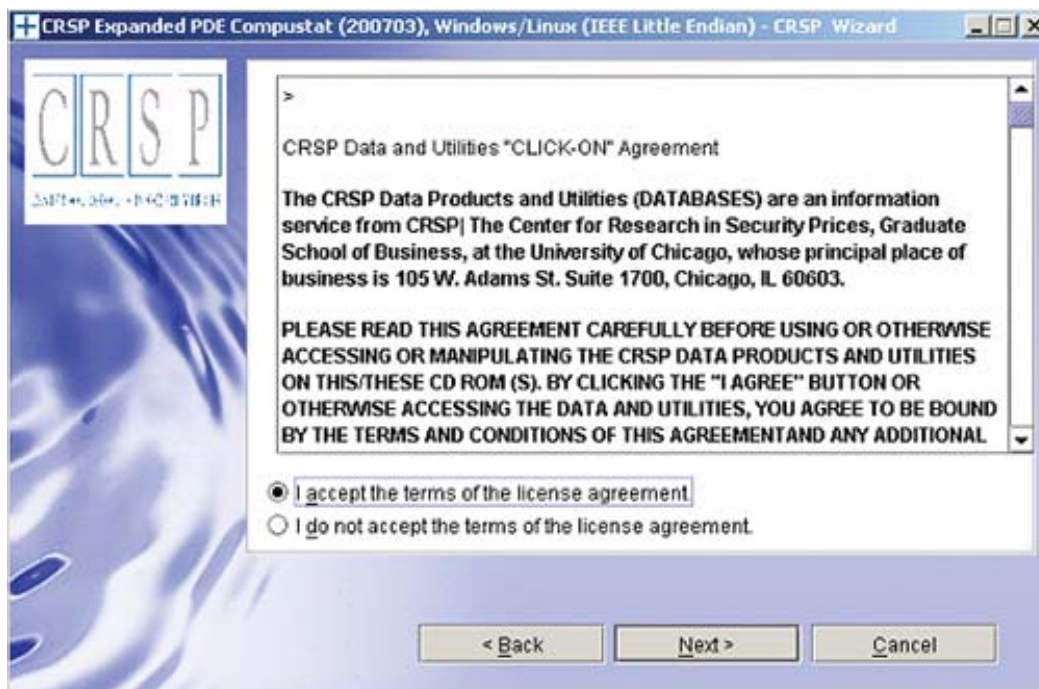
After inserting the CD, a terminal will open with the file, `setupsolaris.bin`. Double click on this setup file to begin the installation process.

LINUX:

Upon insertion of the CD, a terminal will open with the file, `setuplinux.bin`. Double click on this setup file and open a terminal to begin the installation process.



After you have clicked **Next** on the Welcome screen, scroll through and read the CRSP Data and Utilities Agreement. Click to accept the terms of the license agreement, and assuming you do, click **Next**.

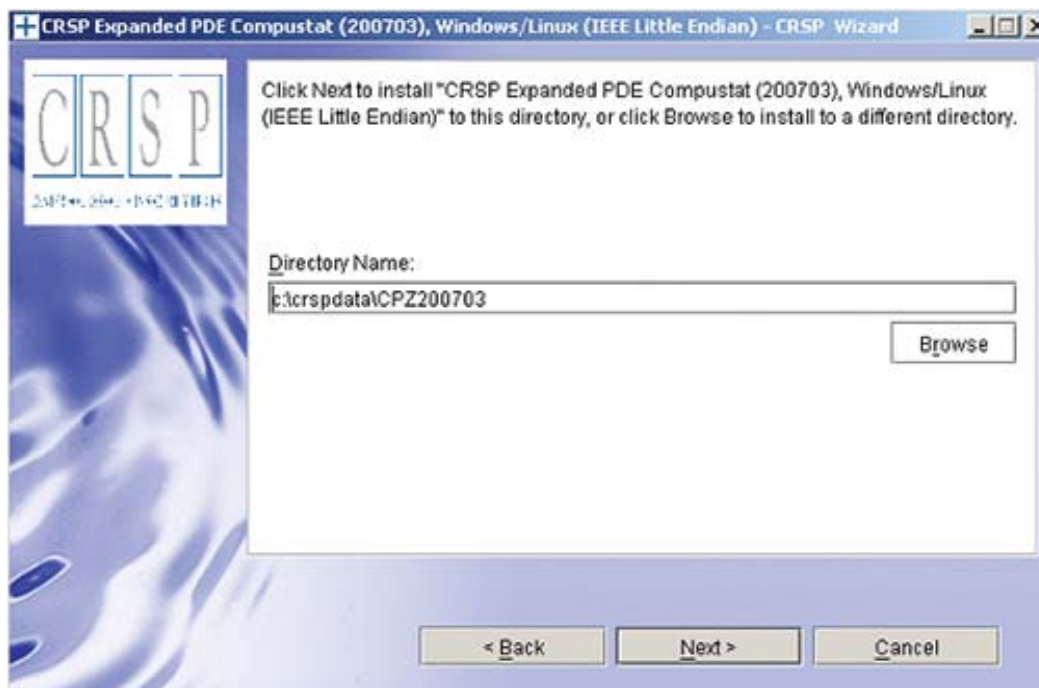


WINDOWS:

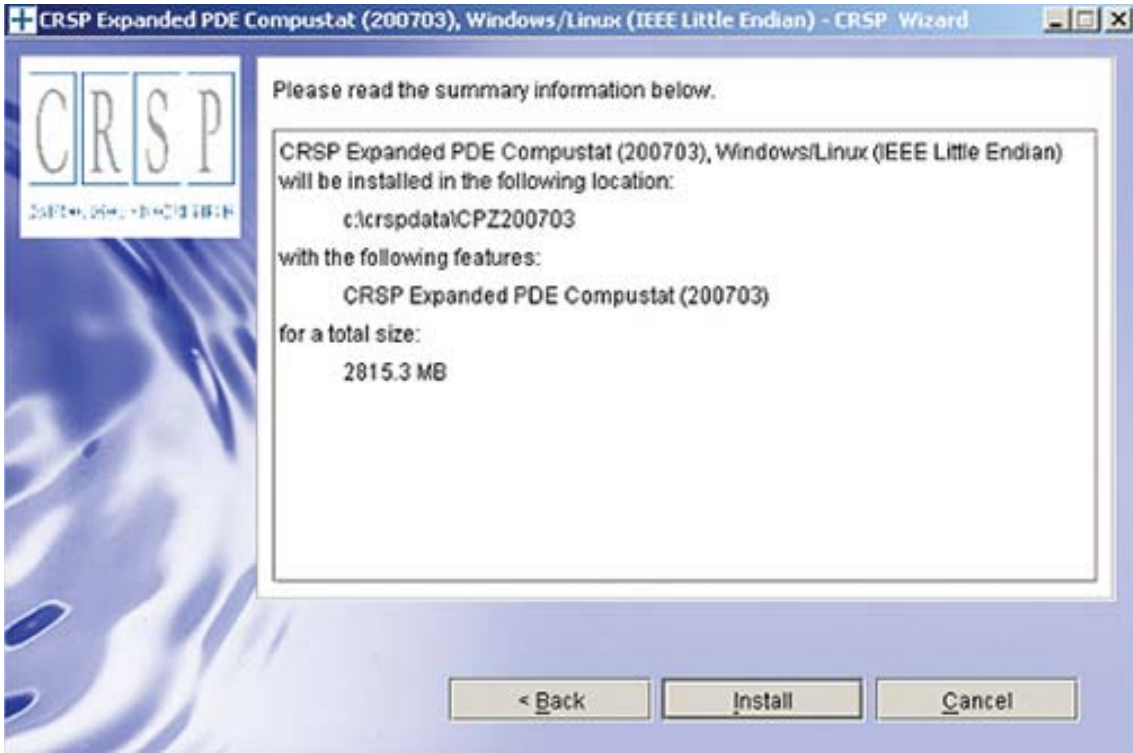
The default directory for the data installation is `c:\crspdata\cczyyyyymm`. You may accept or modify it. Click **Next**. Note: InstallShield does not verify available space. Please see the database parameters on page 1 for space required for installation.

SUN SOLARIS & LINUX:

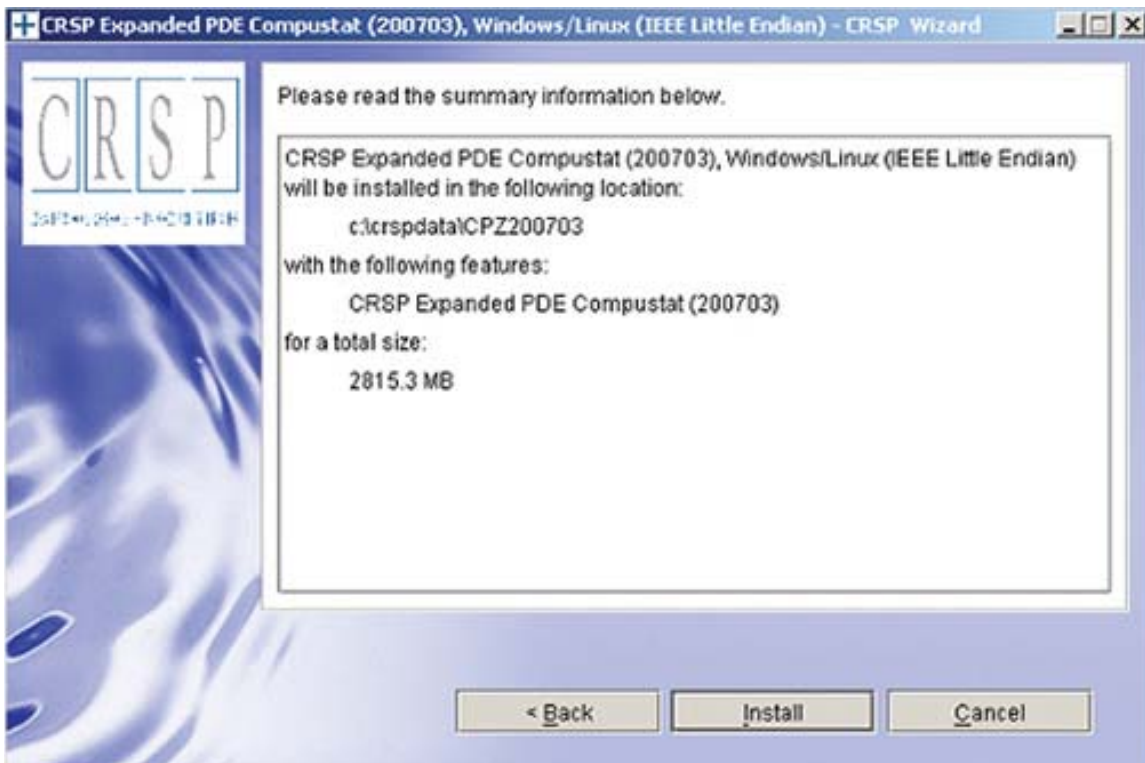
The default directory for the data installation is `/crspdata`. You must have write permission to the directory you specify, for example, `/home/username/crspdata`. Note: InstallShield does not verify available space. Please see the database parameters on page 1 for space required for installation.



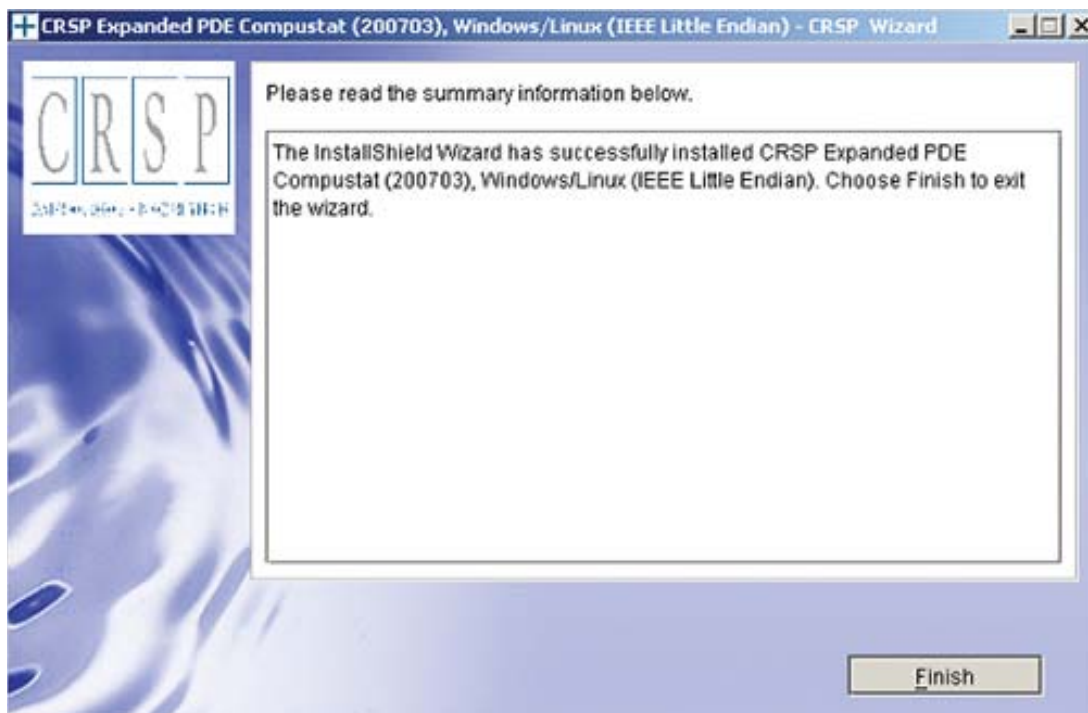
Summary information is displayed: Location, data components and the amount of space that is required for the data. Click on **Install** to proceed.



The screen will display the status of your installation.



A message indicating the success of the installation appears when the process is complete. Click **Finish**.



SUN SOLARIS & LINUX:

After clicking Finish, a file named `crsp.kshrc` must be run to set the local environment variable for the database. At the prompt, type:

```
> . ./crsp.kshrc <enter>
```

Note: If you are not using `ksh`, modifications will be necessary. Check with your Unix administrator.

WINDOWS:

Location of the software and data may be checked by opening **CRSP Client Environment** from the CRSPAccess menu. This new utility provides users a quick and simple way of both checking and switching environment variables if necessary. Where, in the past, users had to go through the Control Panel to manipulate the environment variables, this can now be done by quick editing of the Client Environment screen.

CRSPAccess Client Environment

CRSP Root
CRSP Root Directory
This folder/directory contains the CRSP root subfolders that will allow the CRSP utilities to function properly.

N:\crsroot294\

CRSP Monthly Stock
CRSP Monthly Stock Database Directory

c:\crspdta\MIZ200611\

CRSP Daily Stock
CRSP Daily Stock Database Directory

c:\crspdta\DIZ200611\

CRSP Work
CRSP Work Directory
This folder/directory is used for storage of temporary files, log files and contains subfolders that may hold user created files

C:\CRSP\work\

CRSP Compustat CCM
CRSP Compustat Merged Database Directory

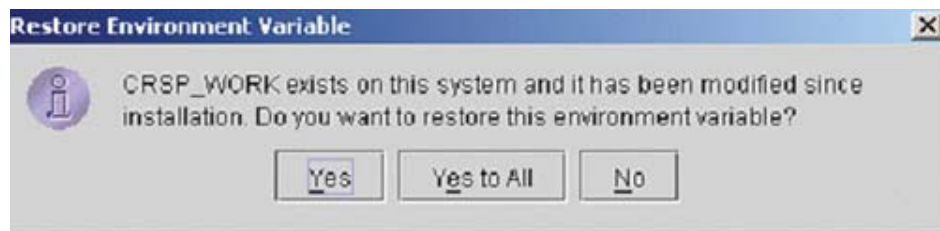
c:\crspdta\CPZ200703\

UNINSTALL

For each data install, an uninstall is created on the CRSPAccess menu. Data uninstalls do not touch software. Likewise, software uninstalls do not touch data. Each uninstall is done separately. As with the install, the uninstall is wizard-driven. When installation of either software or data is complete, users may be prompted with an option to either reboot the computer or wait until later.

Uninstall & CRSP Client Environment

Each time a path is modified in client environment, the action is recorded. Upon running `uninstall`, a *Restore Environment Variable* prompt will appear:



This prompt appears for each variable for each modification. Answer each prompt and continue cycling through. **Yes** is the default, which will restore environment variables back to what they were prior to the install.