

These release notes pertain to the December 2008 Quarterly release of the CRSP US Stock and Indices databases.

This shipment of data utilizes the InstallShield® wizard. Because the data are compressed, data files are not accessible without first installing through the wizard. This applies to all CRSP data and software products. InstallShield® works for all three platforms: Windows, Linux, and Sun Solaris.

DECEMBER CONSUMER PRICE INDEX NUMBER UPDATE

CRSP supplies monthly CPI numbers in the Stock and Indices Databases and standalone Indices files. In order to meet shipment deadlines, these databases were sealed prior to the release of the December CPI number.

- ♦ Monthly Return (Dec 2008): -1.0342%
- ♦ Quarterly Return: -3.910199%
- ♦ Annual Return: 0.09148412%

The numbers above correspond to a CPI level of 494.6540, based on CRSP's indexing to 100 on 12/29/1972.

Depending on your processes, you may be able to manually edit the numbers we have provided into your series. CRSP will provide a database patch to those who require the numbers to be in the Stock and Indices database in order to access it. The patch will be available in the first week of February. To request the patch, please contact Support@crsp.ChicagoBooth.edu or call 312.263.6400, Option 2. The December number will be available in the January cut of the database that will ship in mid-February.

AMEX ACQUIRED: NOW NYSE ALTERNEXT US

On October 1, NYSE Euronext completed its acquisition of the American Stock Exchange LLC. AMEX's new name, NYSE Alternext US, is reflected in this January 2009 data cut.

Beginning in mid-September, a number of ETF's that were formerly trading on AMEX were moved to NYSE Arca. 34 securities moved in September, 58 in October, and 316 in the November-cut shipment.

The volume of ETF's moving between exchanges affected CRSP's broad market indices that are included in all of our stock databases. The NYSE ARCA exchange increased by roughly 400 securities creating a net market capitalization increase of nearly \$140 Billion as of the end of November. As a result, we took the following actions:

- For this stock-only data cut, CRSP has added two indices:
 - ♦ 1000200 – NYSE, Alternext, NASDAQ, Arca Value-Weighted Market Index
 - ♦ 1000201 – NYSE, Alternext, NASDAQ, Arca Equal-Weighted Market Index
- For all subsequent stock-only data cuts, CRSP will retain the two newly added indices, and remove the following:
 - ♦ 1000080 – NYSE, Alternext, NASDAQ Value-Weighted Market Index
 - ♦ 1000081 – NYSE, Alternext, NASDAQ Equal-Weighted Market Index

The offerings in the CRSP Indices products do not change other than the AMEX name change to NYSE Alternext US. It should be noted, however, that subscribers who have been relying on the NYSE, AMEX, NASDAQ Market Indices (1000080, 1000081) may find that the NYSE, Alternext, NASDAQ, Arca Market Indices (1000200, 1000201) align better with the old NAN indices than will the new NAN indices.



CENTER FOR RESEARCH IN SECURITY PRICES

A Research Center at Chicago Booth

For information about the transition, please follow these links:

<http://www.nyse.com/attachment/AmexToNYSEArcaTransferSheet.xls>

<http://www.amex.com/amextrader/tdrInfo/data/axNotices/2008/etf08061.pdf>

DECEMBER 2008 DATA EDITS

GROUP EDITS

BEGIN DATE	END DATE	DESCRIPTION
20070801	20080930	Reviewed and corrected all non final distributions for 20070901-20080930. Changed dividend amounts, distribution codes, distribution dates, factor to adjust price, factor to adjust shares, acquiring PERMNO and acquiring PERMCO as needed.

INDIVIDUAL EDITS

PERMNO	COMPANY NAME	BEGIN DATE	END DATE	DESCRIPTION
92814	DIREXION SHARES E T F TRUST	11/5/2008	11/5/2008	Changed begin date to 20081105 from 20081106 and added prices.
89780	LEHMAN BROS FIRST TR INC OP FD	7/29/2003	11/28/2008	Sharecode was changed from 14 to 44 for entire history.
85755	S M & A	1/29/2002	12/31/2399	Changed name to S M & A from S M & A TECHNOLOGIES INC for 20020129 to present.
88856	STEWART W P & CO LTD	11/19/2008	11/20/2008	Changed ex-date, record date and pay date to 20081120 from 20081119 for reverse stock split
50614	WINTHROP REALTY TRUST	11/28/2008	12/1/2008	Changed ex-date, record date and pay date to 20081201 from 20081128 for reverse stock split

NOVEMBER 2008 DATA EDITS

GROUP EDITS

- Reviewed and corrected all non-final distributions for 20070801-20070831 and 20071201-20071231. Changed dividend amounts, distribution codes, distribution dates, factor to adjust price, factor to adjust shares, acquiring PERMNO and acquiring PERMCO as needed.
- Researched PERMNOS with SIC Code 0 from 2002 to the present. Added SIC Codes where available.

INDIVIDUAL EDITS

PERMNO	COMPANY NAME	BEGIN DATE	END DATE	DESCRIPTION
79057	ACE LTD NEW	7/18/2008	10/31/2008	Changed name to ACE LTD NEW from ACE LTD to signify cusip change on 20080718.
85411	AMERICAN ITALIAN PASTA CO	12/20/2006	11/13/2008	Added zero nameline from 20061220-20081113 to reflect off-exchange activity
87026	AMERICAN MORTGAGE ACCEPTANCE CO	10/29/2008	10/31/2008	Changed delist code to 584, added next date & next price of 20081111 and 0.02, and added delist date of 20081029 to the delist array and removed halt record for 20081030-20081031 from the names array
83630	BROADVISION INC	3/6/2006	11/9/2008	Added zero nameline from 20060306-20081109 to reflect off-exchange activity
92235	BROOKE CAPITAL CORP	10/23/2008	10/31/2008	Changed delist code to 574, added next date & next price of 20081110 and 0.35, and added delist date of 20081023 to the delist array and removed halt record for 20081024-20081031 from the names array

PERMNO	COMPANY NAME	BEGIN DATE	END DATE	DESCRIPTION
86162	FEDERAL TRUST CORP	6/17/1998	9/30/2008	Changed delist code to 584, added next date & next price of 20081111 and 0.0001, and added delist date of 20080930 to the delist array and removed halt record for 20080930 20081031 from the names array
90970	FIRST NATIONAL BANCSHARES INC	3/17/2008	10/28/2008	Changed number of shares on 20080317 from 6389 to 3725, on 20080331 from 6368 to 3696, on 20080513 from 6365 to 3696, on 20080630 from 6402 to 3739, on 20080930 from 6404 to 3739 and on 20081029 from 6404 to 3739.
90437	M P C CORPORATION	10/21/2008	11/5/2008	Changed delist code to 574, added next date & next price of 20081105 and 0.01, and added delist date of 20081021 to the delist array and removed halt record for 20081022 20081031 from the names array
27975	MESABI TRUST			Changed sharecode to 71 from 21 throughout entire history
63706	NORTH EUROPEAN OIL RTY TR			Changed sharecode to 71 from 21 throughout entire history
89379	TRIZEC PROPERTIES INC	5/8/2002	5/8/2002	Changed tsymbol to TRZ from TRZWI for 20020508

OCTOBER 2008 DATA EDITS

GROUP EDITS

Researched partial list of permnos with raw distribution data that had missing ex-date fields. Distributions missing from the stock database were added and distribution dates were changed where necessary.

INDIVIDUAL EDITS

PERMNO	COMPANY NAME	BEGIN DATE	END DATE	DESCRIPTION
92584	ASIA SPECIAL SITUATION ACQ COR	2/13/2008	10/31/2008	Changed sharecode from 11 to 12 throughout entire history.
86162	FEDERAL TRUST CORP	9/30/2008	10/31/2008	Removed all 20080930 prices and added a halt record for 20080930-present
90319	GOOGLE INC	9/30/2008	9/30/2008	Changed closing price to 400.52 from 403.98, high price to 425.10 from 483.63, low price to 392.32 from 212.63 and volume to 8824587 from 10849100
81085	HEALTH FITNESS CORP	4/23/1999	10/21/2008	Added zero namelines for the period 19990423-20081021 to reflect off exchange activity.
11896	MAXIM INTEGRATED PRODUCTS INC	10/2/2007	10/7/2008	Added zero nameline from 20071002-20081007 to reflect off-exchange activity
92380	SEENERGY MARITIME CORP	10/26/2007	10/31/2008	Changed sharecode from 11 to 12 throughout entire history.
92470	STAR BULK CARRIERS CORP	9/30/2008	10/31/2008	Changed sharecode from 11 to 12 throughout entire history.
89279	UNION BANKSHARES INC	9/4/2008		SIC code changed to 6022 from 6020 on 20080904.

FILE VERSION SPECIFICS

This table contains version specific information for the CRSP Stock Files with data ending December 2008. It contains the number of securities and information about the maximums of the event arrays.

FILE CODE	# OF SECURITIES	MAX NAMES	MAX DISTS	MAX SHARES	MAX DELISTS	MAX GROUPS	MAX NASDIN	FIRST PERMNO	LAST PERMNO
DAZ	27945	39	1012	563	1	4	2069	10000	93324
MAZ	27390	28	1012	563	1	3	2069	10000	93324

CALENDAR	DATE RANGE	DATE INDEX RANGE
Daily trading calendar	19251231-20081231	1-22025
Month-end trading calendar	19251231-20081231	1-997
Year-end trading calendar	19251231-20091231	1-85
Quarter-end trading calendar	19251231-20091231	1-337
Weekly trading calendar	19260102-20081231	1-4331

CRSPACCESS PRODUCT INFORMATION

To simplify installation for our subscribers, data are bundled into product groups. Information relevant to each product group is listed.

PRODUCT NAME	DATABASE	MEDIA	SIZE	INDICES	PORTFOLIOS	COMPONENTS & DESCRIPTION
CRSP 1925 US Stock with Indices	FIZyyyyymm	DVD	3.4 GB	All CRSP indices and portfolio assignments	All portfolios	DI - 1925 Daily US Stock & Indices MI - 1925 Monthly US Stock & Indices IF - CRSP Supplemental US Indices
CRSP 1925 US Stock	FAZyyyyymm	DVD	3.0 GB	CRSP NYSE/ AMEX/ NASDAQ Value-weighted Market, CRSP NYSE/ AMEX/ NASDAQ Equal-weighted Market, S&P 500 Composite, NASDAQ Composite	NYSE/ AMEX/ NASDAQ Capitalization Deciles	DA - 1925 Daily US Stock MA - 1925 Monthly US Stock IN - CRSP Limited US Indices
CRSP 1962 US Stock	A6Zyyyyymm	DVD	2.7 GB	CRSP NYSE/ AMEX/ NASDAQ Value-weighted Market, CRSP NYSE/ AMEX/ NASDAQ Equal-weighted Market, S&P 500 Composite, NASDAQ Composite	NYSE/ AMEX/ NASDAQ Capitalization Deciles	D6 - 1962 Daily US Stock M6 - 1962 Monthly US Stock IN - CRSP Limited US Indices
CRSP 1962 US Stock with Indices	AXZyyyyymm	DVD	2.9 GB	See FIZ	All portfolios	DX - 1962 Daily US Stock & Indices MX - 1962 Monthly US Stock & Indices IF - CRSP Supplemental US Indices
CRSP 1925 US Indices	IFZyyyyymm	CD	111 MB			IF - CRSP Supplemental US Indices
Daily & Monthly Treasuries	BAZyyyyymm	CD	981 MB			BD - Daily Treasuries BA - Monthly Treasuries
Daily Treasuries	BDZyyyyymm	CD	902 MB			BD - Daily Treasuries
Monthly Treasuries	BMZyyyyymm	CD	78.6 MB			BM - Monthly Treasuries
Mutual Fund Database	MFZyyyyymm	DVD	3.21 GB			MF - Mutual Funds
CRSP/Ziman Daily & Monthly REIT	RAZyyyyymm	CD	196 MB			RD - Daily REITs RM - Monthly REITs
CRSP/Ziman Monthly REIT	RMZyyyyymm	CD	186 MB			RM - Monthly REITs

Instructions and screen shots for installation are written for Windows. Differences related to Linux and Sun or media are noted.

WINDOWS:

To install data, insert your DVD into the drive and from the Start Menu, select Run d:\setupwin32.exe. Click OK.

SUN SOLARIS (DVD INSTALL):

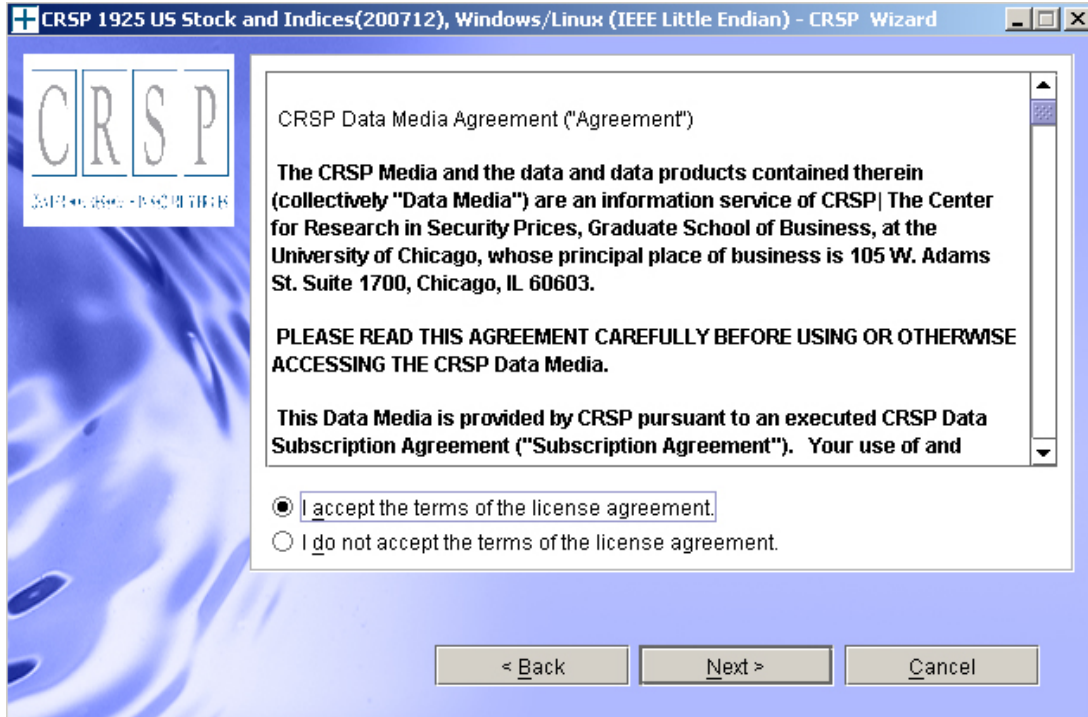
After inserting the DVD, a file manager will open with the file, setupsolaris.bin. Double click on this setup file to begin the installation process.

LINUX(DVD INSTALL):

Upon insertion of the DVD, a file manager will open with the file, setuplinux.bin. Double click on this setup file to begin the installation process.

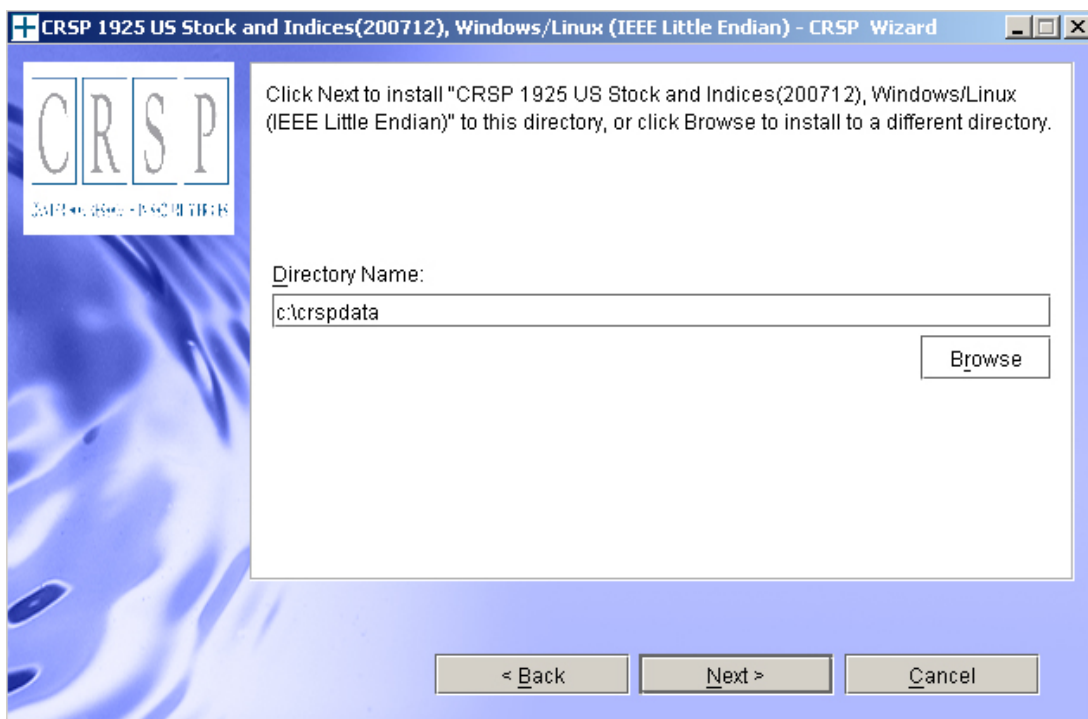


After clicking on **Next** on the Welcome screen, scroll through and read the CRSP Data and Utilities Agreement. Click to accept the terms of the license agreement. Click **Next**.

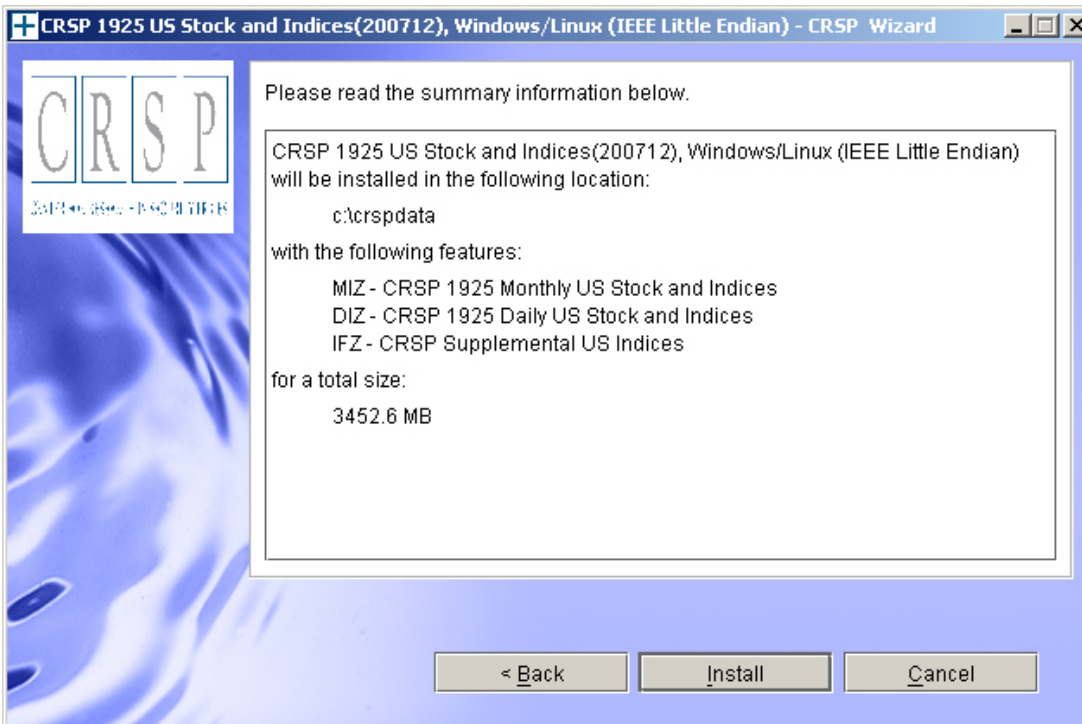


WINDOWS: The default directory for the data installation is `c:\crspdata`. You may accept or modify it. Click **Next**. Note: InstallShield does not verify available space. Please see the CRSPAccess Product Information chart on page 2 for space required for installation.

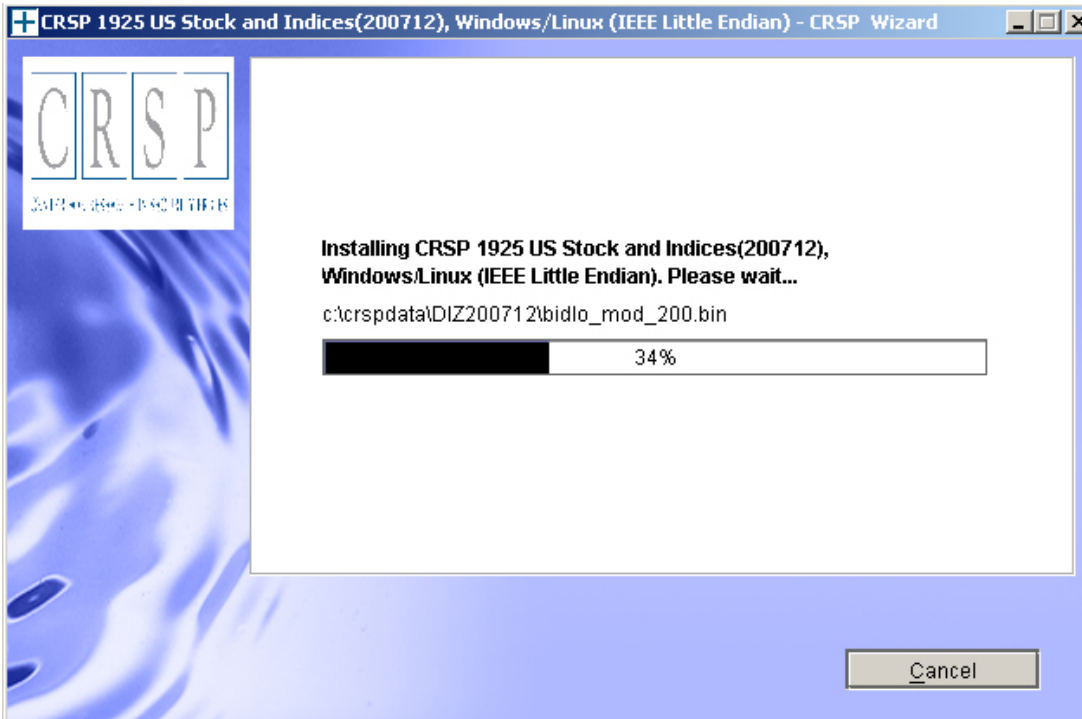
SUN SOLARIS & LINUX: The default directory for the data installation is `/crspdata`. You must have write permission to the directory you specify, for example, `/home/username/crspdata`. Note: InstallShield does not verify available space. Please see the CRSPAccess Product Information chart on page 2 for space required for installation.



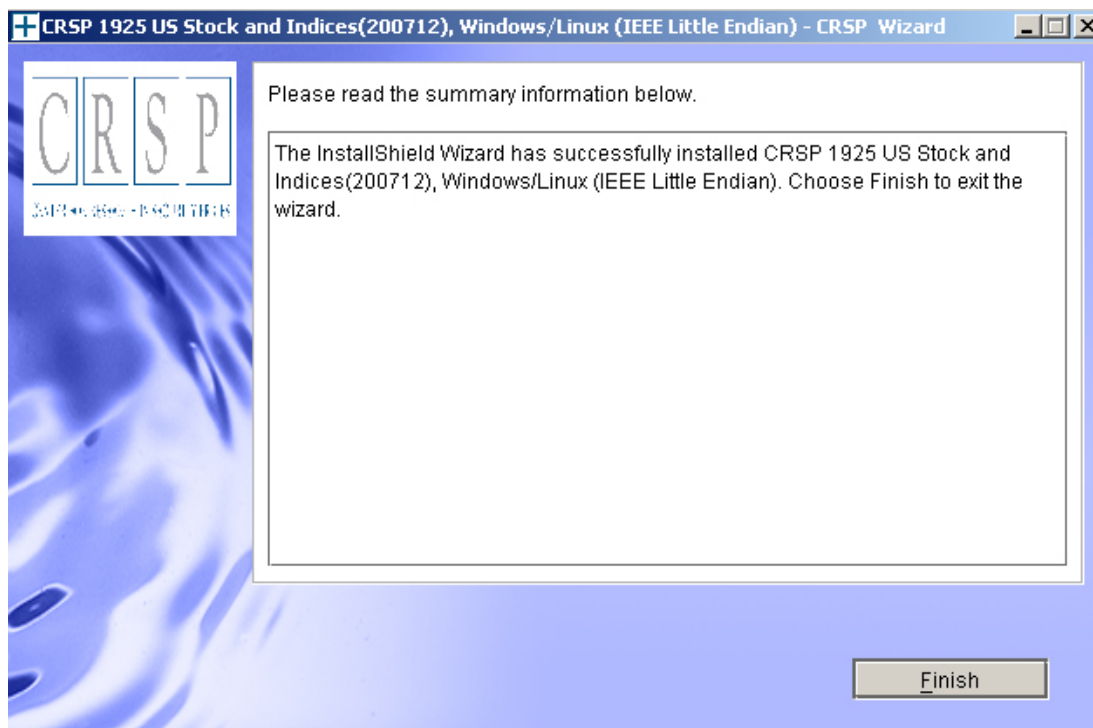
Summary information is displayed: Location, data components and the amount of space that is required for the data. Click on **Install** to proceed.



The screen will display the status of the installation.



A message indicating the success of the installation appears when the process is complete. Click **Finish**.



SUN SOLARIS & LINUX:

After clicking Finish, a file named `crsp.kshrc` must be run to set the local environment variables. At the prompt, type:

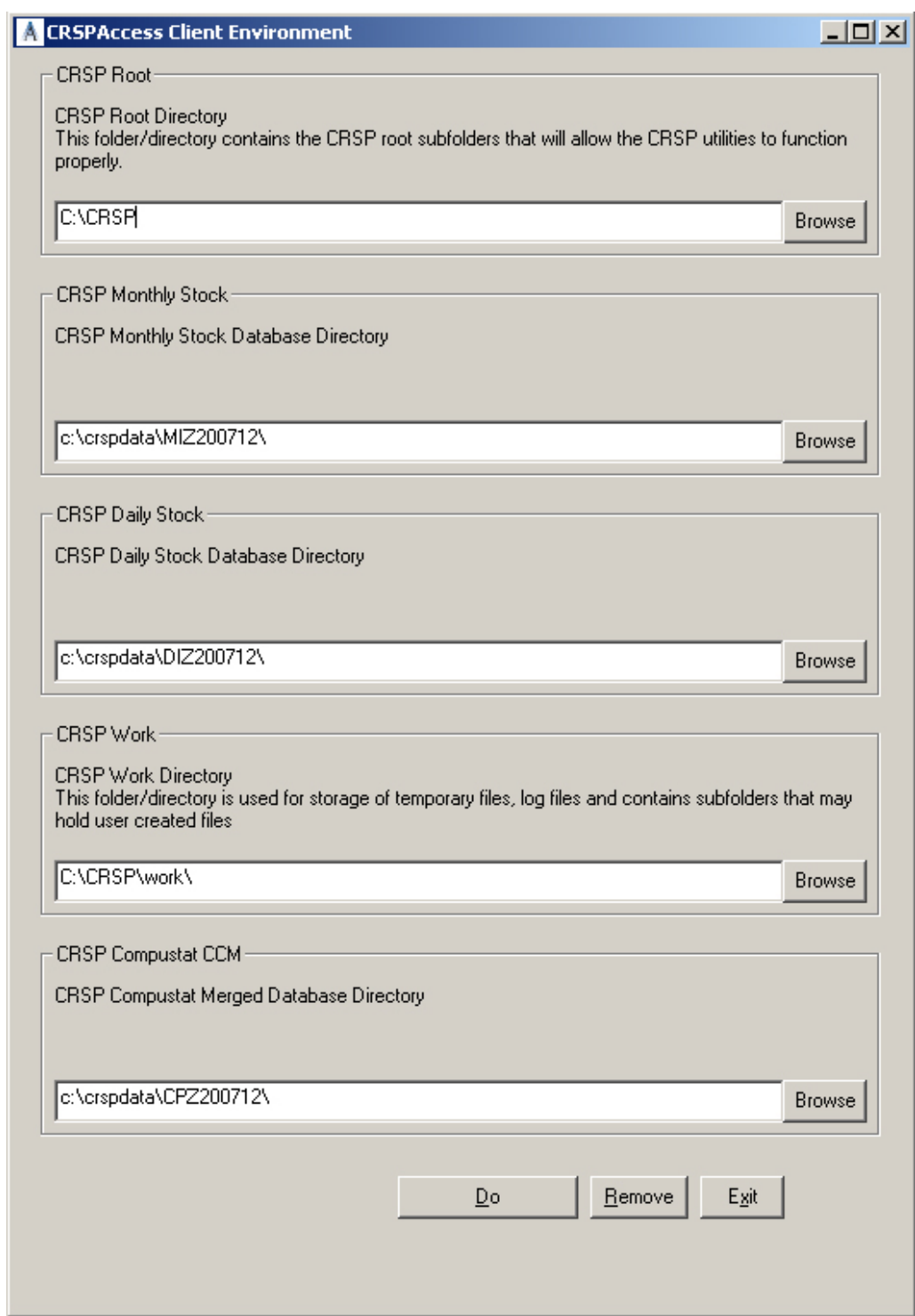
```
. ./crsp.kshrc <enter>
```

Note: If you are not using `ksh`, modifications will be necessary. Check with your Unix administrator.

WINDOWS:

Location of the software and data may be checked by opening CRSP Client Environment from the CRSPAccess menu. This new utility provides users a quick and simple way of both checking and switching environment variables if necessary. Where, in the past, users had to go through the Control Panel to manipulate the environment variables, this can now be done by quick editing of the Client Environment screen.

Note: For subscribers of the CRSP Compustat Merged database, an additional CCM database environment will be displayed for the location of the Compustat data.

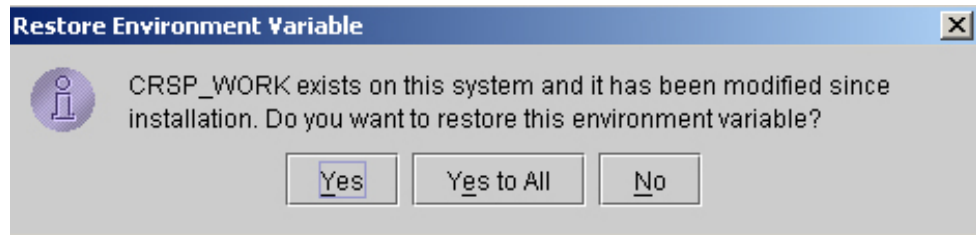


UNINSTALL

For each data install, an uninstall is created on the CRSPAccess menu. Data uninstalls do not touch software environment variables. Likewise, software uninstalls do not touch data environment variables. Each uninstall is done separately. As with the install, the uninstall is wizard-driven. When uninstall is complete, users may be prompted with an option to either reboot the computer or wait until later. It is not necessary to reboot the computer after uninstalling. This reboot message may be disregarded.

Uninstall & CRSP Client Environment

Each time a path is modified in client environment, the action is recorded. Upon running `uninstall`, a *Restore Environment Variable* prompt will appear:



This prompt appears for each variable for each modification. Answer each prompt and continue cycling through. Yes is the default, which will restore environment variables back to what they were prior to the install.