

These release notes pertain to the June 2009 Monthly release of the CRSP US Stock and Indices databases.

This shipment of data utilizes the InstallShield® wizard. Because the data are compressed, data files are not accessible without first installing through the wizard. This applies to all CRSP data and software products. InstallShield® works for all three platforms: Windows, Linux, and Sun Solaris.

JUNE 2009 DATA EDITS

| PERMNO | COMPANY NAME | BEGIN DATE | END DATE | DESCRIPTION |
|--------|----------------------------------|------------|----------|---|
| 91608 | CITIZENS FIRST CORP | 20070321 | 20070321 | Changed volume from 0 to 102 on 20070321 |
| 85966 | COLONY BANKCORP INC | 20070321 | 20070321 | Changed volume from 0 to 100 on 20070321 |
| 81546 | COMMUNITY BANK SHRS INDIANA INC | 20070321 | 20070321 | Changed volume from 0 to 100 on 20070321 |
| 11748 | DONEGAL GROUP INC | 20070321 | 20070321 | Changed volume from 0 to 100 on 20070321 |
| 80239 | EMAK WORLDWIDE INC | 20070321 | 20070321 | Changed volume from 0 to 800 on 20070321 |
| 90590 | ENTERPRISE BANCORP INC | 20070321 | 20070321 | Changed volume from 0 to 1000 on 20070321 |
| 77778 | FIRST FEDERAL BANKSHARES INC DEL | 20070321 | 20070321 | Changed volume from 0 to 100 on 20070321 |
| 91828 | FIRST TRUST EXCHANGE TRADED FUND | 20070802 | 20070802 | Changed Bid/Ask average from -21.045 to -21.135 on 20070802 Changed Ask from 20.97 to 21.15 on 20070802 |
| 78892 | I E C ELECTRONICS CORP NEW | 20090609 | 20090609 | Added zero name line for period 20021203-20090608. |
| 12490 | INTERNATIONAL BUSINESS MACHS COR | 20080117 | 20080117 | Changed low price from 10.04 to 100.05 on 20080117 |
| 92062 | ISHARES TRUST | 20070523 | 20070523 | Changed volume from 1000 to 0 on 20070523 |
| 89631 | ISOLAGEN INC | 20090512 | 20090512 | Changed end date from 20090529 to 20090506 and delist code from 100 to 574. |
| 62084 | KENT FINANCIAL SERVICES INC | 20070321 | 20070321 | Changed volume from 0 to 100 on 20070321 |
| 47571 | KEWAUNEE SCIENTIFIC CORP | 20070321 | 20070321 | Changed volume from 0 to 100 on 20070321 |
| 81259 | L S B FINANCIAL CORP | 20070321 | 20070321 | Changed volume from 0 to 285 on 20070321 |
| 10709 | MANATRON INC | 20070321 | 20070321 | Changed volume from 0 to 102 on 20070321 |
| 91471 | OPEXA THERAPEUTICS INC | 20070321 | 20070321 | Changed volume from 0 to 100 on 20070321 |
| 78195 | P V F CAPITAL CORP | 20070321 | 20070321 | Changed volume from 0 to 1000 on 20070321 |
| 14461 | SONESTA INTERNATIONAL HOTELS CP | 20070227 | 20070227 | Changed volume from 0 to 199 on 20070227 |
| 90295 | SUFFOLK FIRST BANK VA | 20070321 | 20070321 | Changed volume from 0 to 490 on 20070321 |
| 81588 | TAITRON COMPONENTS INC | 20070321 | 20070321 | Changed volume from 0 to 251 on 20070321 |
| 78629 | TAT TECHNOLOGIES LTD | 20020906 | 20020906 | Changed closing price from 0 to 2.20 on 20020906 |
| 80159 | TUFCO TECHNOLOGIES INC | 20070321 | 20070321 | Changed volume from 0 to 100 on 20070321 |

FILE VERSION SPECIFICS

This table contains version specific information for the CRSP Stock Files with data ending June 2009. It contains the number of securities and information about the maximums of the event arrays.

| FILE CODE | # OF SECURITIES | MAX NAMES | MAX DIST | MAX SHARES | MAX DELISTS | MAX GROUPS | MAX NASDIN | FIRST PERMNO | LAST PERMNO |
|-----------|-----------------|-----------|----------|------------|-------------|------------|------------|--------------|-------------|
| DAZ | 28032 | 39 | 1074 | 563 | 1 | 4 | 2112 | 10000 | 93324 |
| MAZ | 28002 | 39 | 1074 | 563 | 1 | 4 | 2112 | 10000 | 93324 |

| CALENDAR | DATE RANGE | DATE INDEX RANGE |
|------------------------------|-------------------|------------------|
| Daily trading calendar | 19251231-20090630 | 1-22149 |
| Month-end trading calendar | 19251231-20090630 | 1-1003 |
| Year-end trading calendar | 19251231-20101231 | 1-86 |
| Quarter-end trading calendar | 19251231-20101231 | 1-341 |
| Weekly trading calendar | 19260102-20090630 | 1-4357 |

CRSPACCESS PRODUCT INFORMATION

To simplify installation for our subscribers, data are bundled into product groups. Information relevant to each product group is listed.

| PRODUCT NAME | DATABASE | MEDIA | SIZE | INDICES | PORTFOLIOS | COMPONENTS & DESCRIPTION |
|---------------------------------|-----------|-------|---------|---|---|---|
| CRSP 1925 US Stock with Indices | FIZyyyymm | DVD | 3.5 GB | All CRSP indices and portfolio assignments | All portfolios | DI - 1925 Daily US Stock & Indices MI - 1925 Monthly US Stock & Indices IF - CRSP Supplemental US Indices |
| CRSP 1925 US Stock | FAZyyyymm | DVD | 3.1 GB | CRSP NYSE/ AMEX/ NASDAQ Value-weighted Market, CRSP NYSE/ AMEX/ NASDAQ Equal-weighted Market, S&P 500 Composite, NASDAQ Composite | NYSE/ AMEX/ NASDAQ Capitalization Deciles | DA - 1925 Daily US Stock MA - 1925 Monthly US Stock IN - CRSP Limited US Indices |
| CRSP 1962 US Stock | A6Zyyyymm | DVD | 2.7 GB | CRSP NYSE/ AMEX/ NASDAQ Value-weighted Market, CRSP NYSE/ AMEX/ NASDAQ Equal-weighted Market, S&P 500 Composite, NASDAQ Composite | NYSE/ AMEX/ NASDAQ Capitalization Deciles | D6 - 1962 Daily US Stock M6 - 1962 Monthly US Stock IN - CRSP Limited US Indices |
| CRSP 1962 US Stock with Indices | AXZyyyymm | DVD | 3.0 GB | See FIZ | All portfolios | DX - 1962 Daily US Stock & Indices MX - 1962 Monthly US Stock & Indices IF - CRSP Supplemental US Indices |
| CRSP 1925 US Indices | IFZyyyymm | CD | 119 MB | | | IF - CRSP Supplemental US Indices |
| Daily & Monthly Treasuries | BAZyyyymm | CD | 981 MB | | | BD - Daily Treasuries BA - Monthly Treasuries |
| Daily Treasuries | BDZyyyymm | CD | 978 MB | | | BD - Daily Treasuries |
| Monthly Treasuries | BMZyyyymm | CD | 84.5 MB | | | BM - Monthly Treasuries |
| Mutual Fund Database | MFZyyyymm | DVD | 3.8 GB | | | MF - Mutual Funds |
| CRSP/Ziman Daily & Monthly REIT | RAZyyyymm | CD | 196 MB | | | RD - Daily REITs RM - Monthly REITs |
| CRSP/Ziman Monthly REIT | RMZyyyymm | CD | 186 MB | | | RM - Monthly REITs |

Instructions and screen shots for installation are written for Windows. Differences related to Linux and Sun or media are noted.

WINDOWS:

To install data, insert your DVD into the drive and from the Start Menu, select Run d:\setupwin32.exe. Click OK.

SUN SOLARIS (DVD INSTALL):

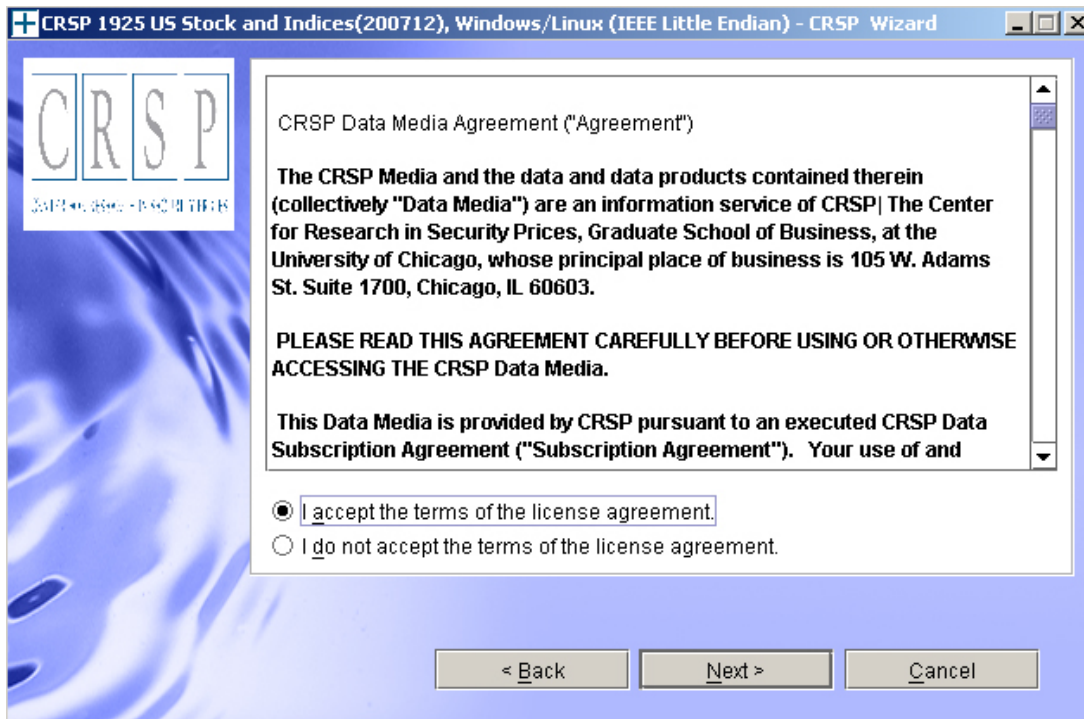
After inserting the DVD, a file manager will open with the file, setupsolaris.bin. Double click on this setup file to begin the installation process.

LINUX(DVD INSTALL):

Upon insertion of the DVD, a file manager will open with the file, setuplinux.bin. Double click on this setup file to begin the installation process.

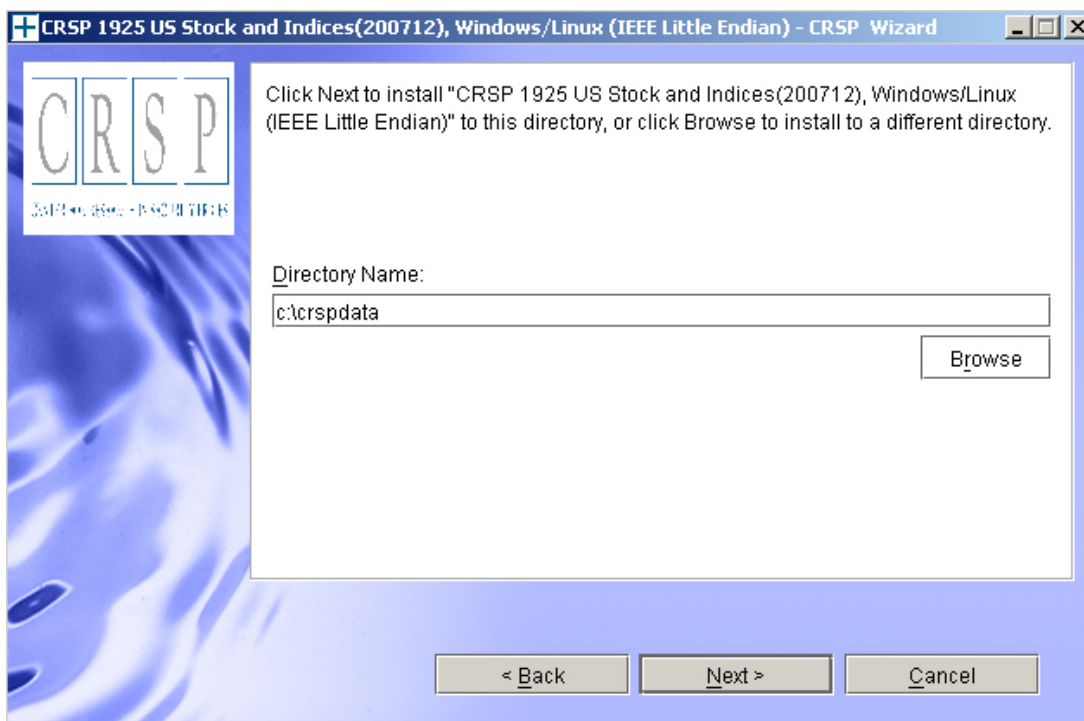


After clicking on **Next** on the Welcome screen, scroll through and read the CRSP Data and Utilities Agreement. Click to accept the terms of the license agreement. Click **Next**.

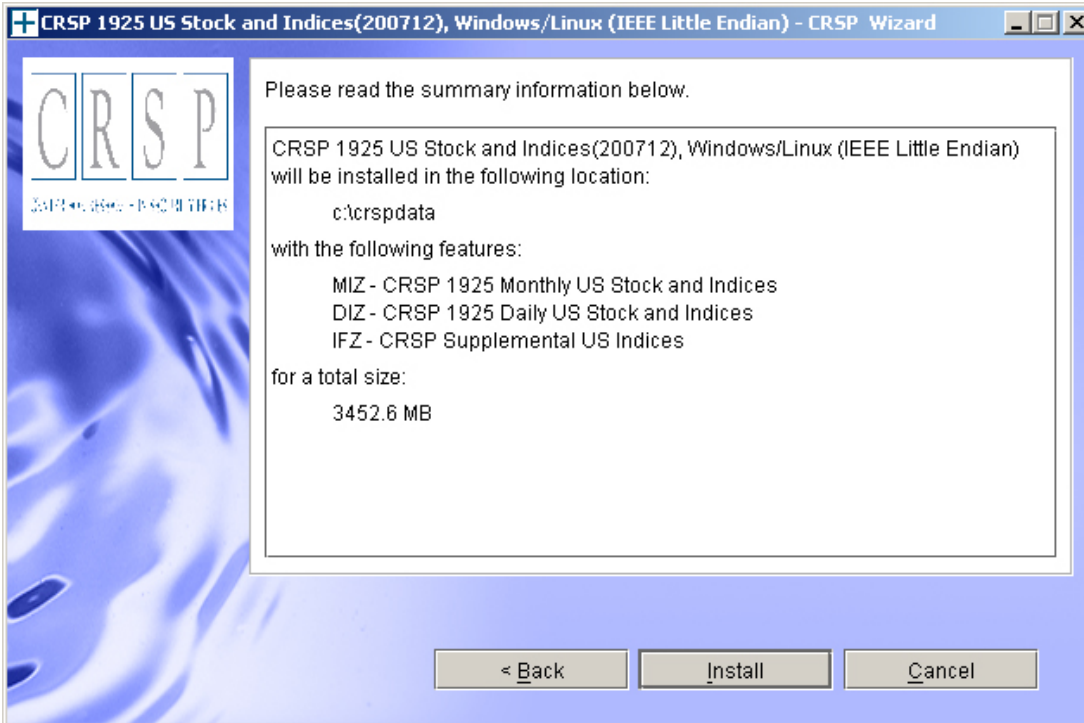


WINDOWS: The default directory for the data installation is `c:\crspdata`. You may accept or modify it. Click **Next**. Note: InstallShield does not verify available space. Please see the CRSPAccess Product Information chart on page 2 for space required for installation.

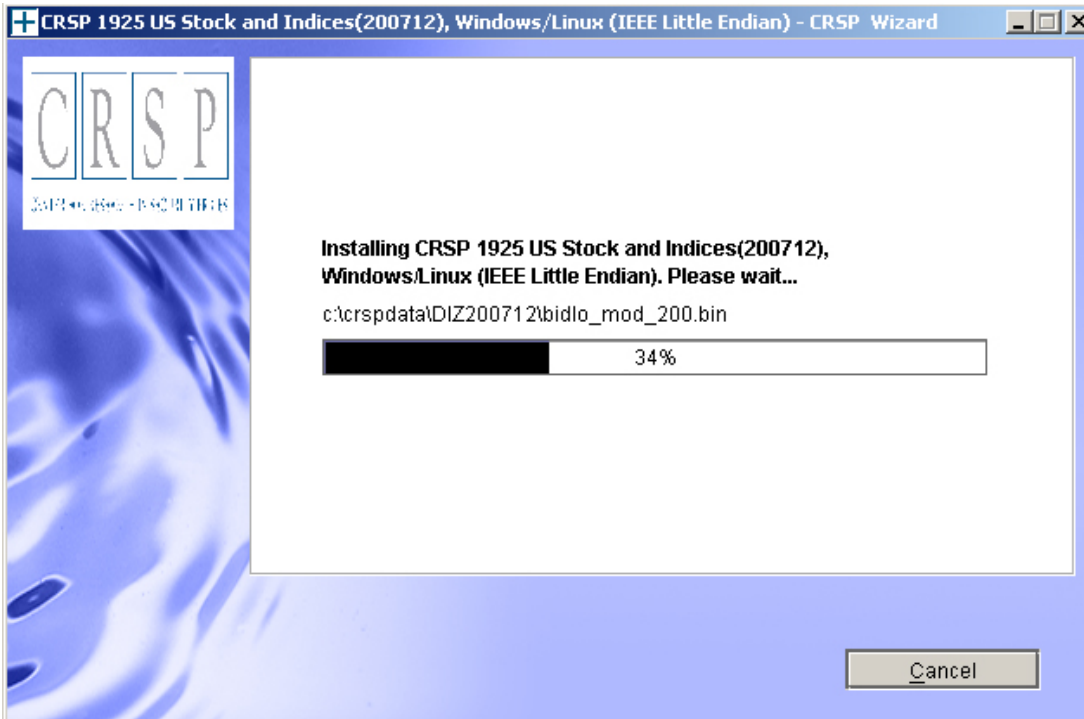
SUN SOLARIS & LINUX: The default directory for the data installation is `/crspdata`. You must have write permission to the directory you specify, for example, `/home/username/crspdata`. Note: InstallShield does not verify available space. Please see the CRSPAccess Product Information chart on page 2 for space required for installation.



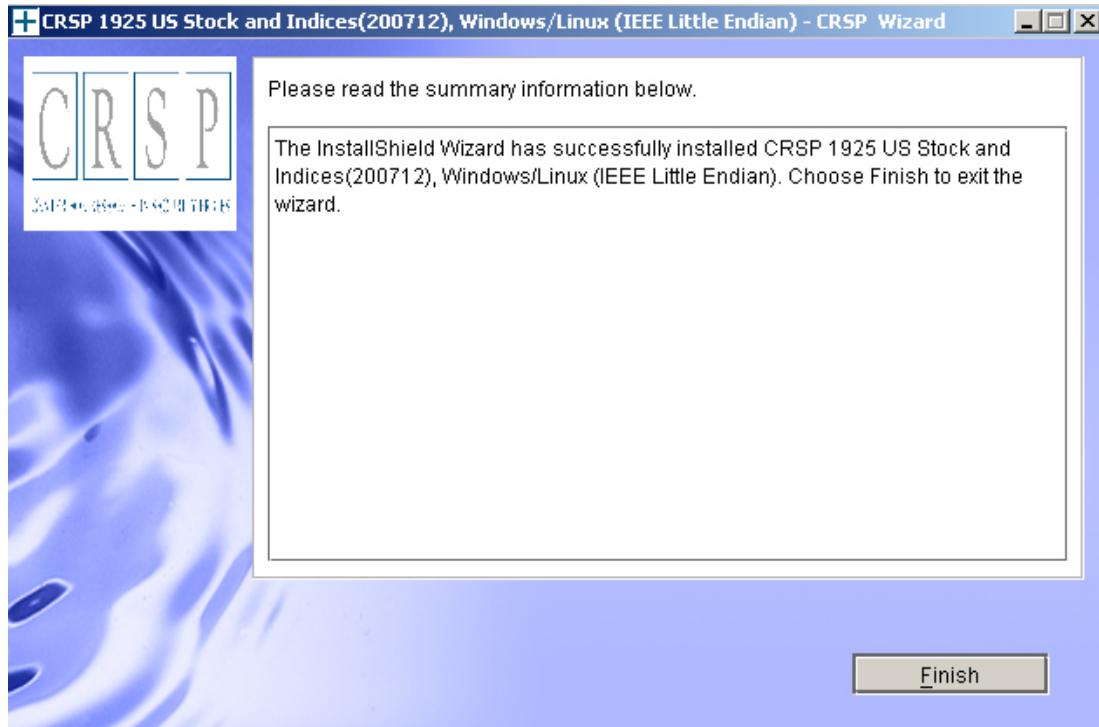
Summary information is displayed: Location, data components and the amount of space that is required for the data. Click on **Install** to proceed.



The screen will display the status of the installation.



A message indicating the success of the installation appears when the process is complete. Click **Finish**.



SUN SOLARIS & LINUX:

After clicking Finish, a file named `crsp.kshrc` must be run to set the local environment variables. At the prompt, type:

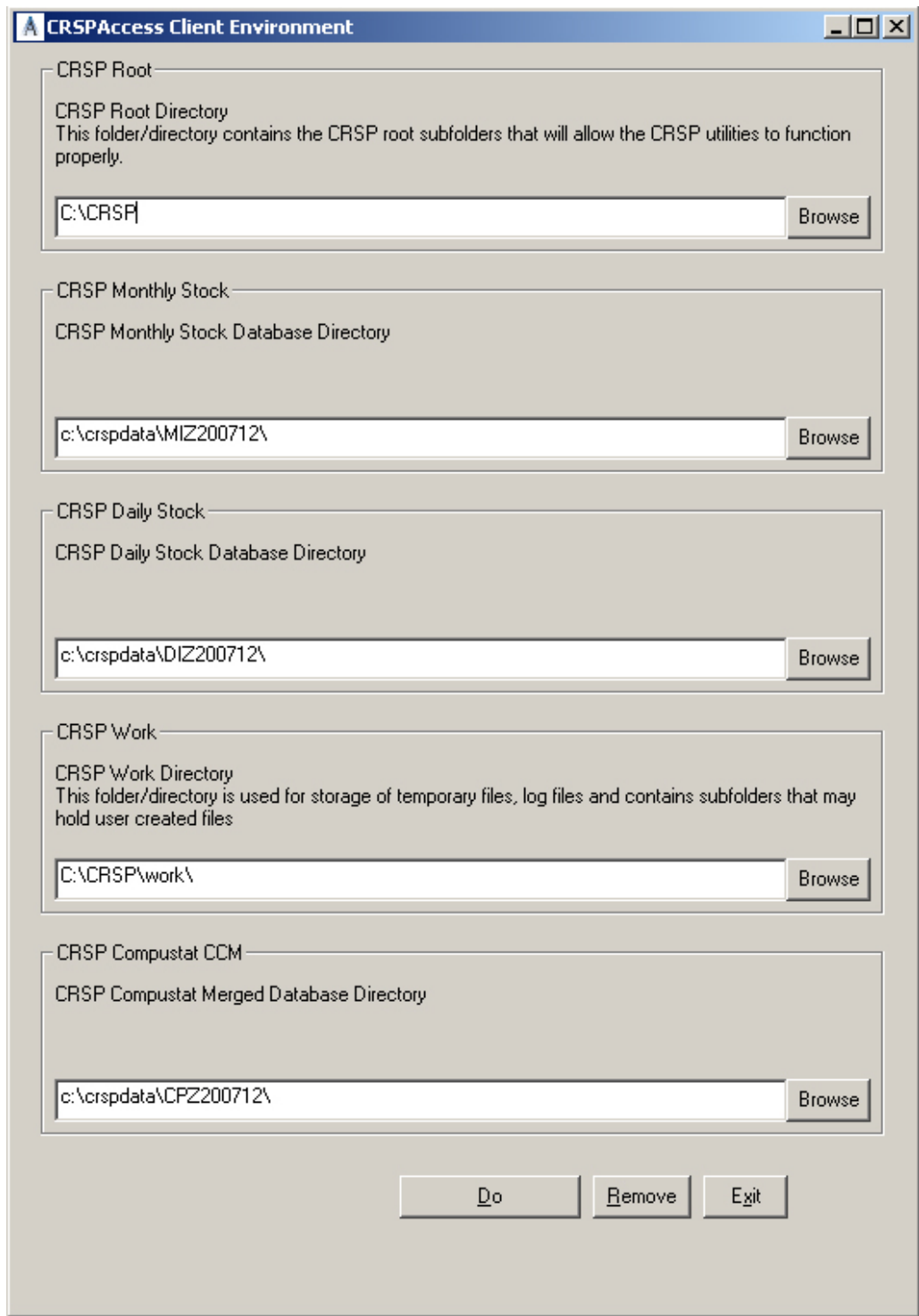
```
. ./crsp.kshrc <enter>
```

Note: If you are not using `ksh`, modifications will be necessary. Check with your Unix administrator.

WINDOWS:

Location of the software and data may be checked by opening CRSP Client Environment from the CRSPAccess menu. This new utility provides users a quick and simple way of both checking and switching environment variables if necessary. Where, in the past, users had to go through the Control Panel to manipulate the environment variables, this can now be done by quick editing of the Client Environment screen.

Note: For subscribers of the CRSP Compustat Merged database, an additional CCM database environment will be displayed for the location of the Compustat data.

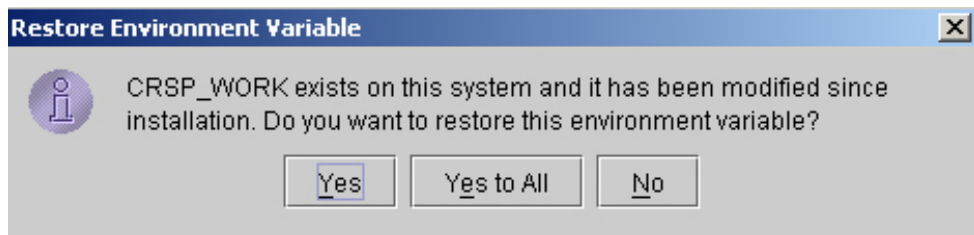


UNINSTALL

For each data install, an uninstall is created on the CRSPAccess menu. Data uninstalls do not touch software environment variables. Likewise, software uninstalls do not touch data environment variables. Each uninstall is done separately. As with the install, the uninstall is wizard-driven. When uninstall is complete, users may be prompted with an option to either reboot the computer or wait until later. It is not necessary to reboot the computer after uninstalling. This reboot message may be disregarded.

Uninstall & CRSP Client Environment

Each time a path is modified in client environment, the action is recorded. Upon running `uninstall`, a *Restore Environment Variable* prompt will appear:



This prompt appears for each variable for each modification. Answer each prompt and continue cycling through. **Yes** is the default, which will restore environment variables back to what they were prior to the install.