

These release notes pertain to the October 2009 Monthly release of the CRSP US Stock and Indices databases.

This shipment of data utilizes the InstallShield® wizard. Because the data are compressed, data files are not accessible without first installing through the wizard. This applies to all CRSP data and software products. InstallShield® works for all three platforms: Windows, Linux, and Sun Solaris.

NEW INSTALLS

Coming soon, CRSP data installs will have a new look. CRSP has upgraded our install process to Install Anywhere. Changes to the install process should be largely transparent. Solaris and Linux users will need to take note of a small change in the way environment variables are set. Detailed information will be provided.

OCTOBER 2009 DATA EDITS

| PERMNO | COMPANY NAME | BEGIN DATE | END DATE | DESCRIPTION |
|--------|--------------------------------|------------|----------|---------------------------------------------------------------------------------------------------------------------------------------------------------------------------------------------------------------------------------------|
| 77393 | BIOTIME INC | 20050715 | 20091029 | Added zero nameline for the period 20050715-20091029 to reflect off exchange trading. |
| 90172 | BLACKROCK S P QLTY RK GLOB EQ | 20040526 | 20090930 | Changed name to BLACKROCK S P QLTY RK GLOB EQ from BLACKROCK S&P QLTY RK GLOB EQ for the period 20051006-20090930. Changed name to S P QUALITY RANKINGS GLOB EQ from S & P QUALITY RANKINGS GLOB EQ for the period 20040526-20051005. |
| 84075 | EDUCATION MANAGEMENT CORP | | | Changed org_id to 99995022 from 60014951 throughout entire history |
| 78091 | GULF RESOURCES INC | 19981030 | 20061022 | Added zero nameline for the period 19981030-20091026 to reflect off exchange trading. |
| 91381 | ISHARES S P GSCI COMM INDEX TR | 20070509 | 20090930 | Changed name to ISHARES S P GSCI COMM INDEX TR from ISHARES S&P GSCI COMM INDEX TR. |
| 61145 | LAZARE KAPLAN INTL INC | 20090916 | 20090930 | Changed halt date to 20090916 from 20090925. |
| 56945 | NATURES SUNSHINE INC | 20060405 | 20091009 | Added zero nameline to reflect off exchange trading for the period 20060405-20091011. |
| 91941 | SANTA MONICA MEDIA CORP | 20070418 | 20090915 | Removed halted trading beginning 20090916 and changed enddate to 20090915. |

FILE VERSION SPECIFICS

This table contains version specific information for the CRSP Stock Files with data ending October 2009. It contains the number of securities and information about the maximums of the event arrays.

| FILE CODE | # OF SECURITIES | MAX NAMES | MAX DIST | MAX SHARES | MAX DELISTS | MAX GROUPS | MAX NASDIN | FIRST PERMNO | LAST PERMNO |
|-----------|-----------------|-----------|----------|------------|-------------|------------|------------|--------------|-------------|
| DAZ | 28142 | 39 | 1110 | 629 | 1 | 4 | 2121 | 10000 | 93324 |
| MAZ | 28073 | 39 | 1110 | 629 | 1 | 4 | 2121 | 10000 | 93324 |

| CALENDAR | DATE RANGE | DATE INDEX RANGE |
|------------------------------|-------------------|------------------|
| Daily trading calendar | 19251231-20091030 | 1-22235 |
| Month-end trading calendar | 19251231-20091030 | 1-1007 |
| Year-end trading calendar | 19251231-20101231 | 1-86 |
| Quarter-end trading calendar | 19251231-20101231 | 1-341 |
| Weekly trading calendar | 19260102-20091030 | 1-4374 |

CRSPACCESS PRODUCT INFORMATION

To simplify installation for our subscribers, data are bundled into product groups. Information relevant to each product group is listed.

| PRODUCT NAME | DATABASE | MEDIA | SIZE | INDICES | PORTFOLIOS | COMPONENTS & DESCRIPTION |
|---------------------------------|------------|-------|---------|-----------------------------------------------------------------------------------------------------------------------------------|-------------------------------------------|-----------------------------------------------------------------------------------------------------------------|
| CRSP 1925 US Stock with Indices | FIZyyyyymm | DVD | 3.5 GB | All CRSP indices and portfolio assignments | All portfolios | DI - 1925 Daily US Stock & Indices MI - 1925 Monthly US Stock & Indices IF - CRSP Supplemental US Indices |
| CRSP 1925 US Stock | FAZyyyyymm | DVD | 3.1 GB | CRSP NYSE/ AMEX/ NASDAQ Value-weighted Market, CRSP NYSE/ AMEX/ NASDAQ Equal-weighted Market, S&P 500 Composite, NASDAQ Composite | NYSE/ AMEX/ NASDAQ Capitalization Deciles | DA - 1925 Daily US Stock MA - 1925 Monthly US Stock IN - CRSP Limited US Indices |
| CRSP 1962 US Stock | AGZyyyyymm | DVD | 2.7 GB | CRSP NYSE/ AMEX/ NASDAQ Value-weighted Market, CRSP NYSE/ AMEX/ NASDAQ Equal-weighted Market, S&P 500 Composite, NASDAQ Composite | NYSE/ AMEX/ NASDAQ Capitalization Deciles | D6 - 1962 Daily US Stock M6 - 1962 Monthly US Stock IN - CRSP Limited US Indices |
| CRSP 1962 US Stock with Indices | AXZyyyyymm | DVD | 3.0 GB | See FIZ | All portfolios | DX - 1962 Daily US Stock & Indices MX - 1962 Monthly US Stock & Indices IF - CRSP Supplemental US Indices |
| CRSP 1925 US Indices | IFZyyyyymm | DVD | 119 MB | | | IF - CRSP Supplemental US Indices |
| Daily & Monthly Treasuries | BAZyyyyymm | DVD | 981 MB | | | BD - Daily Treasuries BA - Monthly Treasuries |
| Daily Treasuries | BDZyyyyymm | DVD | 978 MB | | | BD - Daily Treasuries |
| Monthly Treasuries | BMZyyyyymm | DVD | 84.5 MB | | | BM - Monthly Treasuries |
| Mutual Fund Database | MFZyyyyymm | DVD | 3.8 GB | | | MF - Mutual Funds |
| CRSP/Ziman Daily & Monthly REIT | RAZyyyyymm | DVD | 196 MB | | | RD - Daily REITs RM - Monthly REITs |
| CRSP/Ziman Monthly REIT | RMZyyyyymm | DVD | 186 MB | | | RM - Monthly REITs |

Instructions and screen shots for installation are written for Windows. Differences related to Linux and Sun or media are noted.

WINDOWS:

To install data, insert your DVD into the drive and from the Start Menu, select Run d:\setupwin32.exe. Click OK.

SUN SOLARIS (DVD INSTALL):

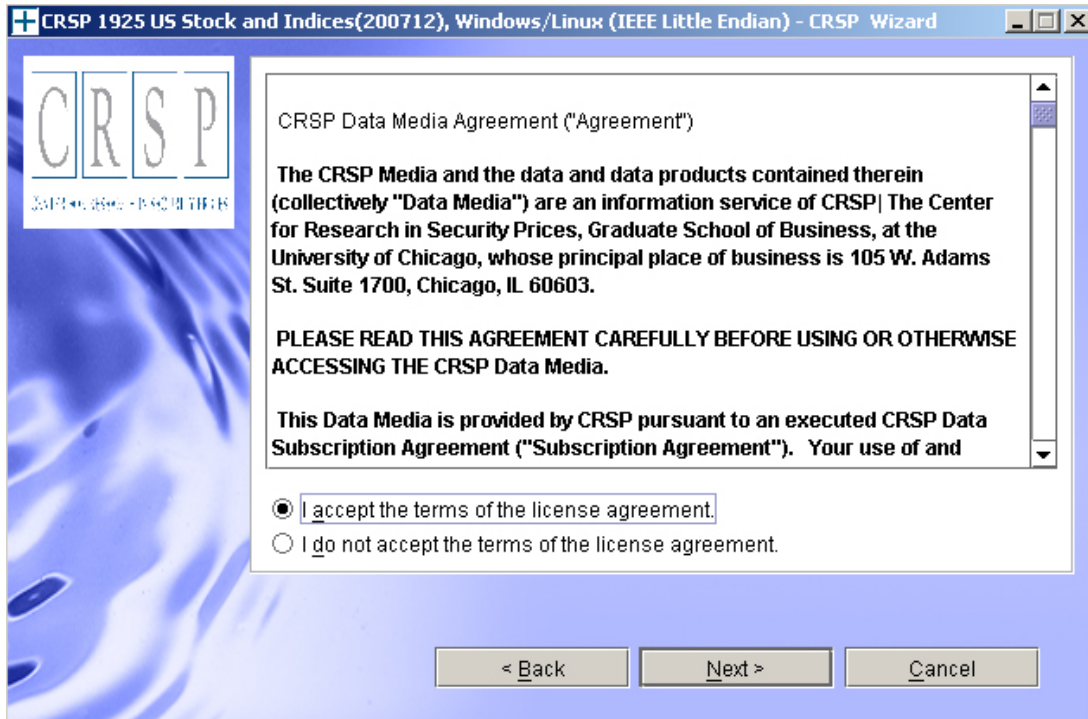
After inserting the DVD, a file manager will open with the file, setupsolaris.bin. Double click on this setup file to begin the installation process.

LINUX(DVD INSTALL):

Upon insertion of the DVD, a file manager will open with the file, setuplinux.bin. Double click on this setup file to begin the installation process.

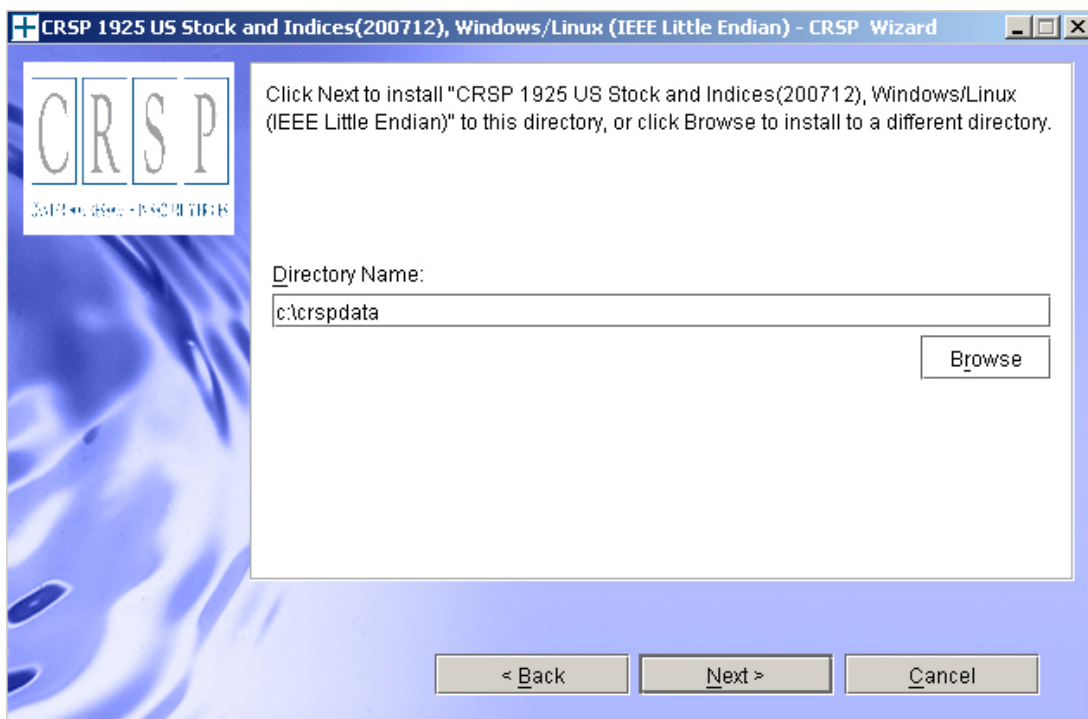


After clicking on **Next** on the Welcome screen, scroll through and read the CRSP Data and Utilities Agreement. Click to accept the terms of the license agreement. Click **Next**.

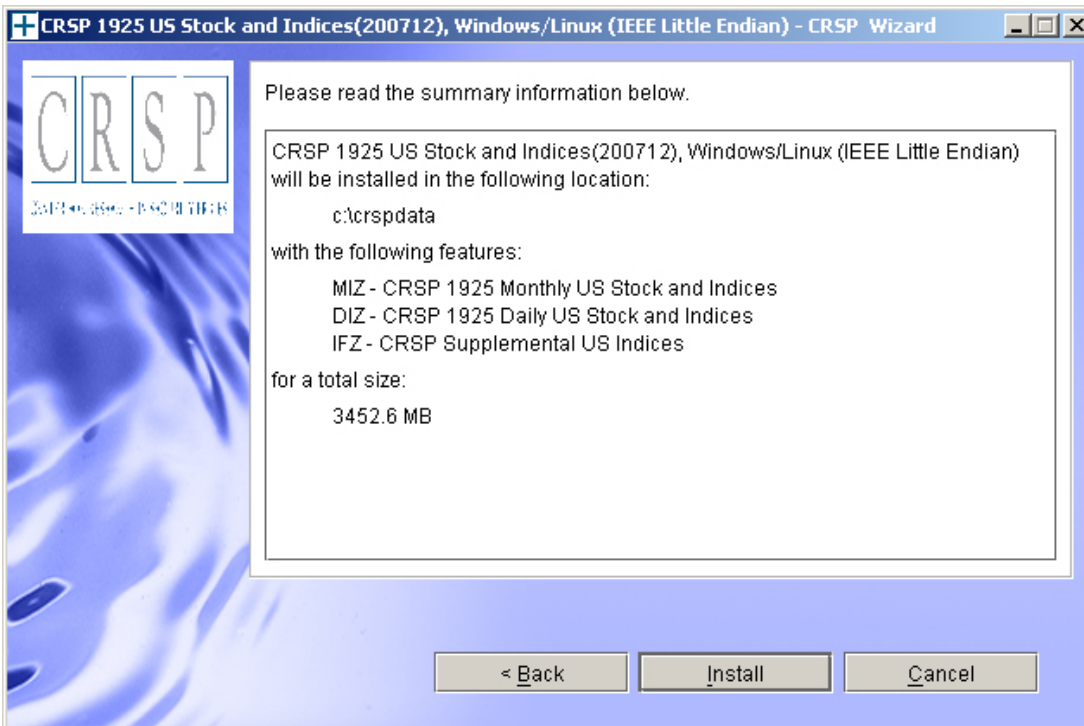


WINDOWS: The default directory for the data installation is `c:\crspdata`. You may accept or modify it. Click **Next**. Note: InstallShield does not verify available space. Please see the CRSPAccess Product Information chart on page 2 for space required for installation.

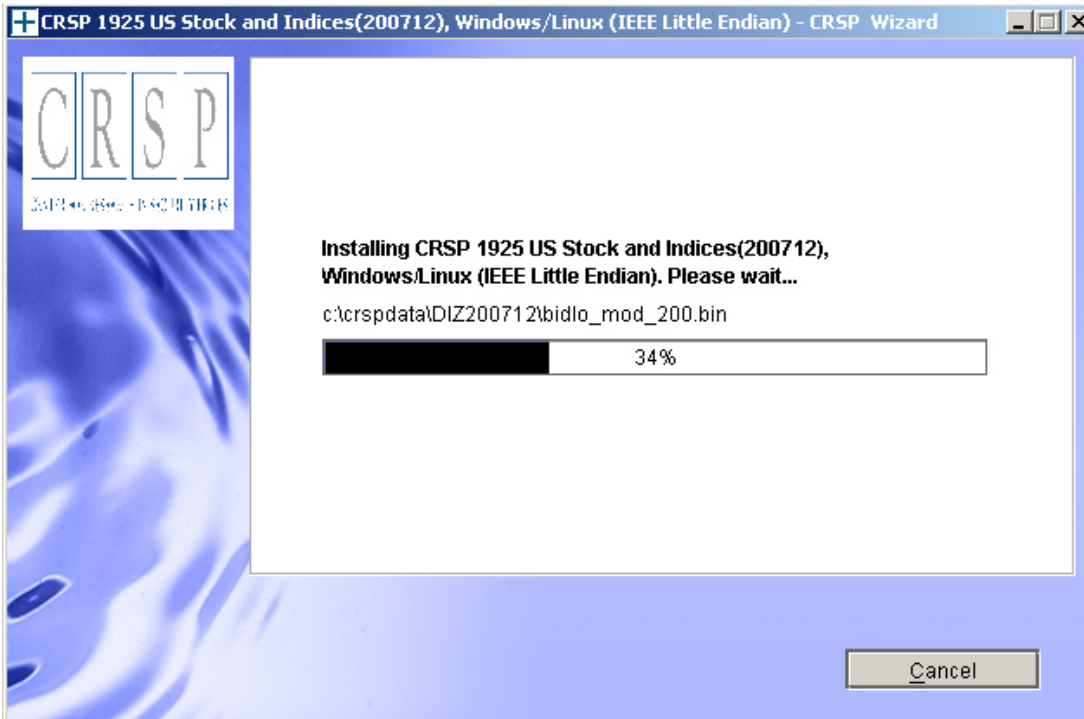
SUN SOLARIS & LINUX: The default directory for the data installation is `/crspdata`. You must have write permission to the directory you specify, for example, `/home/username/crspdata`. Note: InstallShield does not verify available space. Please see the CRSPAccess Product Information chart on page 2 for space required for installation.



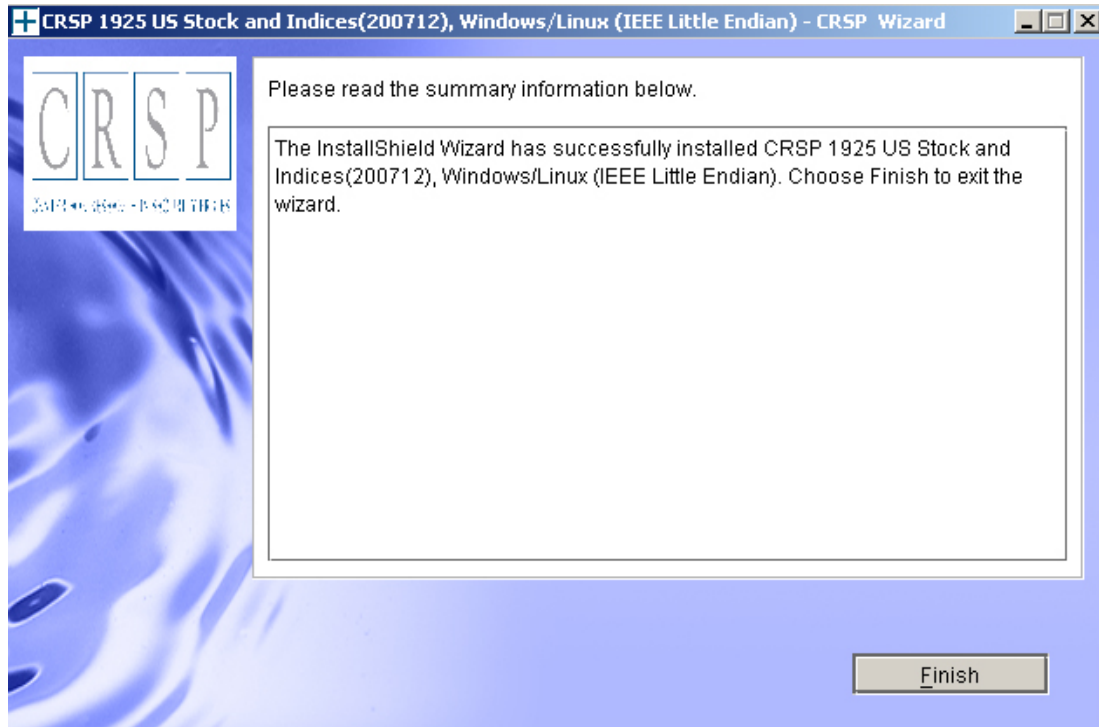
Summary information is displayed: Location, data components and the amount of space that is required for the data. Click on **Install** to proceed.



The screen will display the status of the installation.



A message indicating the success of the installation appears when the process is complete. Click **Finish**.



SUN SOLARIS & LINUX:

After clicking Finish, a file named `crsp.kshrc` must be run to set the local environment variables. At the prompt, type:

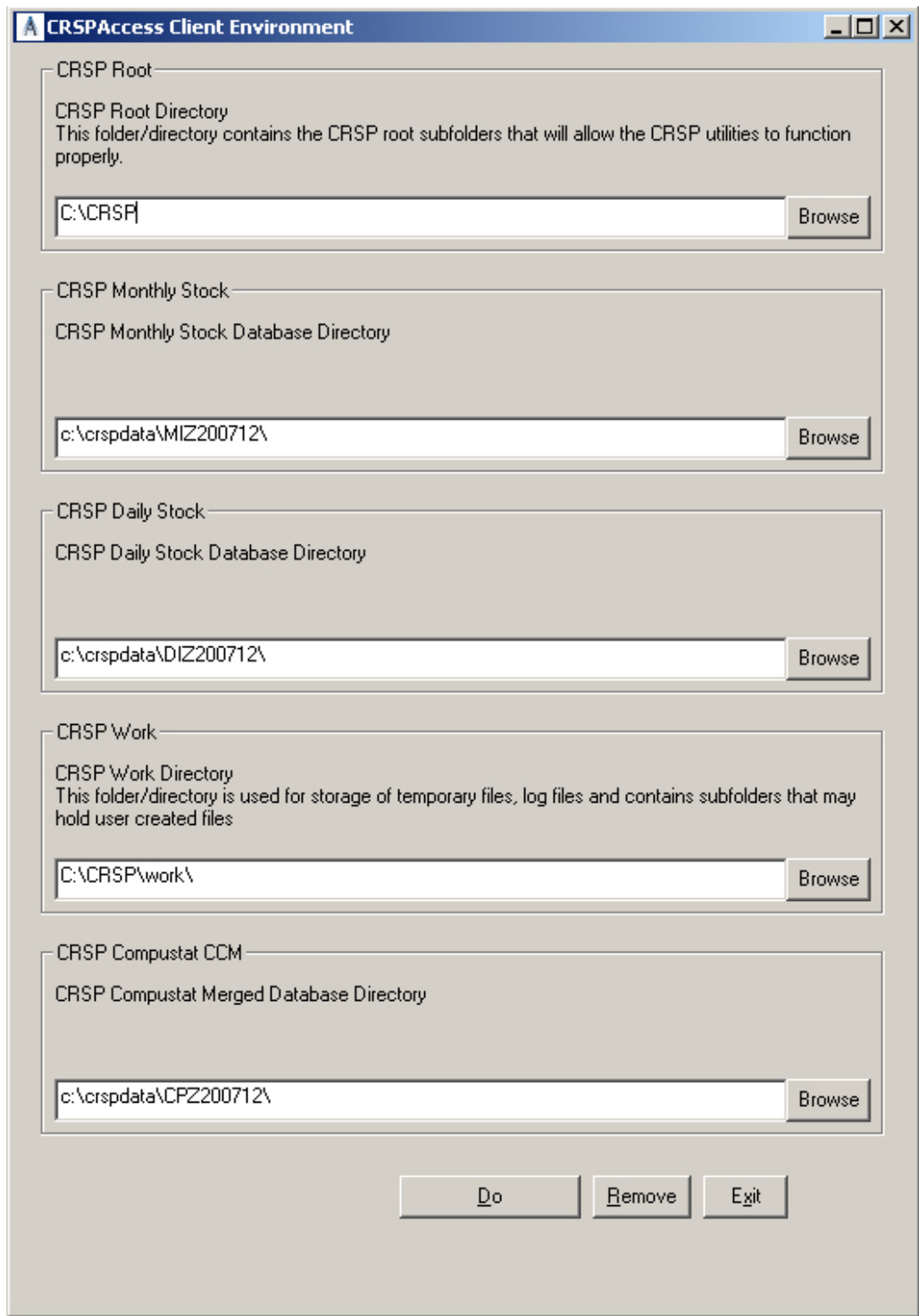
```
. ./crsp.kshrc <enter>
```

Note: If you are not using `ksh`, modifications will be necessary. Check with your Unix administrator.

WINDOWS:

Location of the software and data may be checked by opening CRSP Client Environment from the CRSPAccess menu. This new utility provides users a quick and simple way of both checking and switching environment variables if necessary. Where, in the past, users had to go through the Control Panel to manipulate the environment variables, this can now be done by quick editing of the Client Environment screen.

Note: For subscribers of the CRSP Compustat Merged database, an additional CCM database environment will be displayed for the location of the Compustat data.

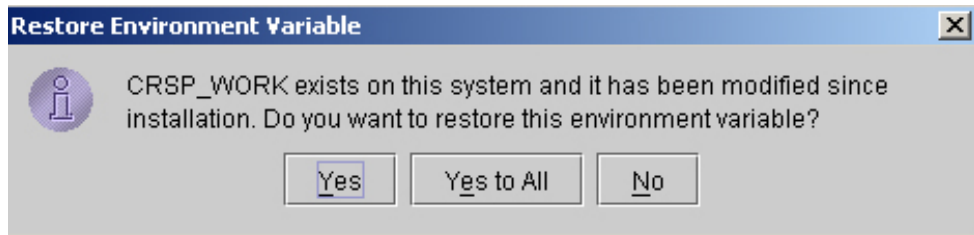


UNINSTALL

For each data install, an uninstall is created on the CRSPAccess menu. Data uninstalls do not touch software environment variables. Likewise, software uninstalls do not touch data environment variables. Each uninstall is done separately. As with the install, the uninstall is wizard-driven. When uninstall is complete, users may be prompted with an option to either reboot the computer or wait until later. It is not necessary to reboot the computer after uninstalling. This reboot message may be disregarded.

Uninstall & CRSP Client Environment

Each time a path is modified in client environment, the action is recorded. Upon running `uninstall`, a *Restore Environment Variable* prompt will appear:



This prompt appears for each variable for each modification. Answer each prompt and continue cycling through. Yes is the default, which will restore environment variables back to what they were prior to the install.