

These release notes pertain to the July 2010 Monthly release of the CRSP US Stock and Indices databases.

JULY 2010 DATA EDITS

INDIVIDUAL EDITS

PERMNO	COMPANY NAME	BEGIN DATE	END DATE	DESCRIPTION
93091	A O L INC	20091124	20091126	Changes SIC code to 7374 from 9999 and added NAICS code of 518210 for 20091124-20091126.
93091	A O L INC	20091210	20091210	Changed start of 'regular way' trading to 20091210 from 20091211
61145	LAZARE KAPLAN INTL INC	20090915	20100630	Changed delist date to 20090915 from 20100630, delist code to 580 from 100, and added next date & next price of 20100707 & \$0.52, respectively.
61145	LAZARE KAPLAN INTL INC	20090916	20100630	Removed all data from 20090916 - 20100630
83885	MICROVISION INC WA	19990119	20000330	Changed shares outstanding to 6087 from 6623 for 19990119-19990330, to 6159 from 6623 for 19990331-19990623, to 7538 from 6623 for 19990624-19990730, to 9851 from 6623 for 19990731-19991028, to 9879 from 6623 for 19991029-20000314 & to 10650 from 6623 for 20000315-20000330
83413	SAPIENT CORP	19991020	20000229	Changed shares outstanding to 28067 from 56134 for 19991020-19991107 and to 56134 from 112268 for 19991108-20000229
80543	SMURFIT STONE CONTAINER CORP NEW	20090204	20100630	Added zero nameline for the period 20090204-20100630 to reflect off exchange activity.
12034	SPROTT PHYSICAL GOLD TRUST			Added entire history of permno 12034 to stock database
74836	TECHNICAL COMMUNICATIONS CORP	20020923	20100714	Added zero nameline for the period 20020923-20100714 to reflect off exchange activity.
89442	UNITED AMERICA INDEMNITY LTD			Changed sharecode to 12 from 11 throughout entire history.
89397	VERINT SYSTEMS INC	20070201	20100705	added zero nameline for the period 20070201-20100705 to reflect off exchange activity.
88620	VERMILLION INC	20080925	20100705	Added zero nameline for the period 20080925 - 20100705 to reflect off exchange activity.

FILE VERSION SPECIFICS

This table contains version specific information for the CRSP Stock Files with data ending July 2010. It contains the number of securities and information about the maximums of the event arrays.

FILE CODE	# OF SECURITIES	MAX NAMES	MAX DISTS	MAX SHARES	MAX DELISTS	MAX GROUPS	MAX NASDIN	FIRST PERMNO	LAST PERMNO
DAZ	28512	39	1208	812	1	4	2151	10000	93436
MAZ	28482	39	1208	812	1	4	2151	10000	93436

CALENDAR	DATE RANGE	DATE INDEX RANGE
Daily trading calendar	19251231-20100730	1-22422

CALENDAR	DATE RANGE	DATE INDEX RANGE
Month-end trading calendar	19251231-20100730	1-1016
Year-end trading calendar	19251231-20111230	1-87
Quarter-end trading calendar	19251231-20111230	1-345
Weekly trading calendar	19260102-20100730	1-4413

CRSPACCESS PRODUCT INFORMATION

To simplify installation for our subscribers, data are bundled into product groups. Information relevant to each product group is listed.

PRODUCT NAME	DATABASE	MEDIA	SIZE	INDICES	PORTFOLIOS	COMPONENTS & DESCRIPTION
CRSP 1925 US Stock with Indices	FIZyyyyymm	DVD	3.6 GB	All CRSP indices and portfolio assignments	All portfolios	DI - 1925 Daily US Stock & Indices MI - 1925 Monthly US Stock & Indices IF - CRSP Supplemental US Indices
CRSP 1925 US Stock	FAZyyyyymm	DVD	3.2 GB	CRSP NYSE/ AMEX/ NASDAQ Value-weighted Market, CRSP NYSE/ AMEX/ NASDAQ Equal-weighted Market, S&P 500 Composite, NASDAQ Composite	NYSE/ AMEX/ NASDAQ Capitalization Deciles	DA - 1925 Daily US Stock MA - 1925 Monthly US Stock IN - CRSP Limited US Indices
CRSP 1962 US Stock	A6Zyyyyymm	DVD	2.8 GB	CRSP NYSE/ AMEX/ NASDAQ Value-weighted Market, CRSP NYSE/ AMEX/ NASDAQ Equal-weighted Market, S&P 500 Composite, NASDAQ Composite	NYSE/ AMEX/ NASDAQ Capitalization Deciles	D6 - 1962 Daily US Stock M6 - 1962 Monthly US Stock IN - CRSP Limited US Indices
CRSP 1962 US Stock with Indices	AXZyyyyymm	DVD	3.1 GB	See FIZ	All portfolios	DX - 1962 Daily US Stock & Indices MX - 1962 Monthly US Stock & Indices IF - CRSP Supplemental US Indices
CRSP 1925 US Indices	IFZyyyyymm	DVD	113 MB			IF - CRSP Supplemental US Indices
Daily & Monthly Treasuries	TRZyyyyymm	DVD	142 MB			TRZ - Daily and Monthly Treasuries
Daily Treasuries	BDZyyyyymm	DVD	980 MB			BD - Daily Treasuries
Monthly Treasuries	BMZyyyyymm	DVD	91.7 MB			BM - Monthly Treasuries
Mutual Fund Database	MFZyyyyymm	DVD	4.7 GB			MF - Mutual Funds
CRSP/Ziman Daily & Monthly REIT	RAZyyyyymm	DVD	164 MB			RD - Daily REITs RM - Monthly REITs
CRSP/Ziman Monthly REIT	RMZyyyyymm	DVD	8 MB			RM - Monthly REITs

DATA INSTALLATION

Instructions and screen shots for installation are written for Windows. Differences related to Linux and Sun or media are noted.

WINDOWS:

To install data, insert your DVD into the drive and from the Start Menu, select Run d:\setupwin32.exe. Click OK.

SUN SOLARIS (DVD INSTALL):

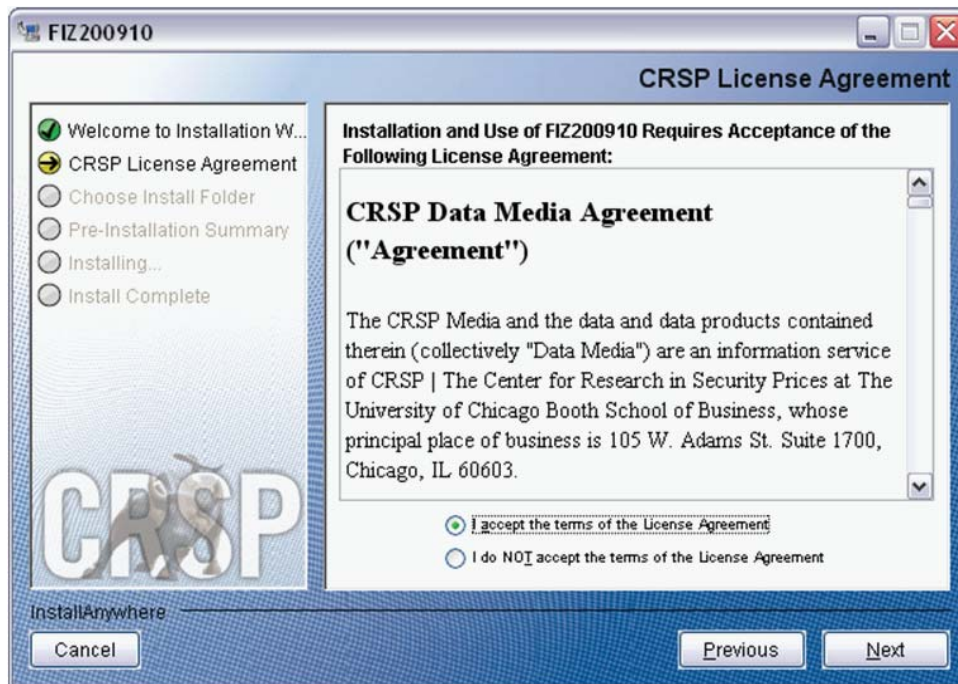
After inserting the DVD, a file manager will open with the file, setupsolaris.bin. Double click on this setup file to begin the installation process.

LINUX(DVD INSTALL):

Upon insertion of the DVD, a file manager will open with the file, setuplinux.bin. Double click on this setup file to begin the installation process.



After clicking on **Next** on the Welcome screen, scroll through and read the CRSP Data and Utilities Agreement. Click to accept the terms of the license agreement. Click **Next**.



WINDOWS: The default directory for the data installation is `c:\crspdata`. You may accept or modify it. Click **Next**.

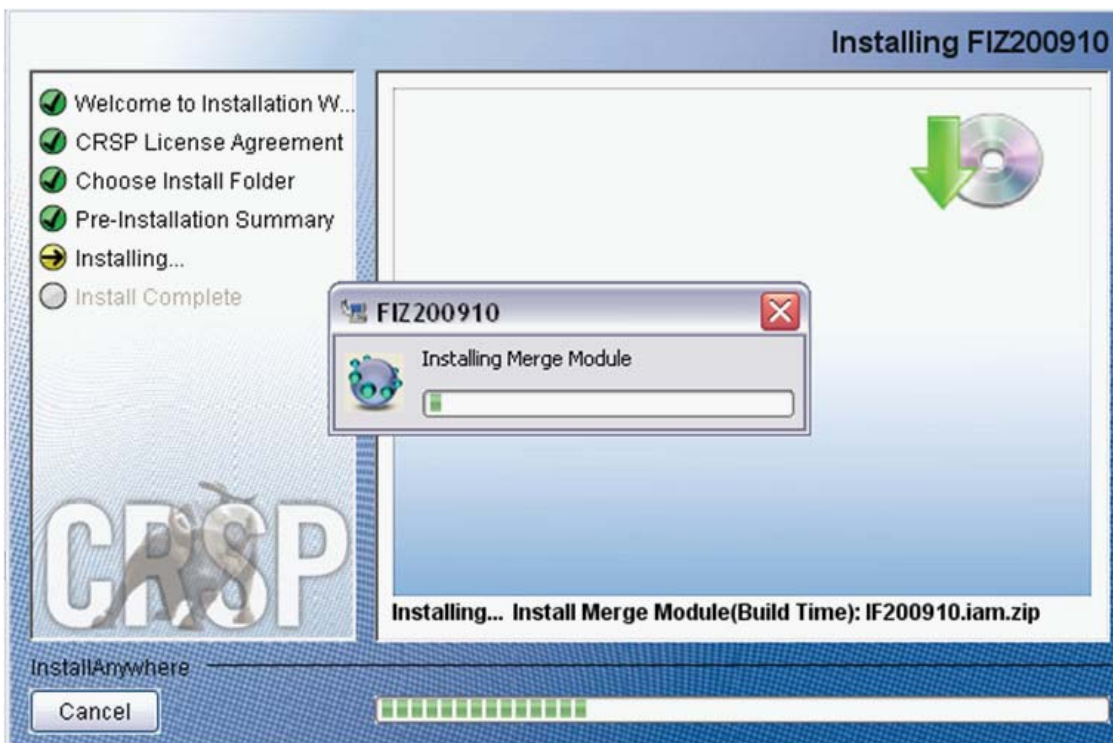
SUN SOLARIS & LINUX: The default directory for the data installation is `/crspdata`. You must have write permission to the directory you specify, for example, `/home/username/crspdata`.



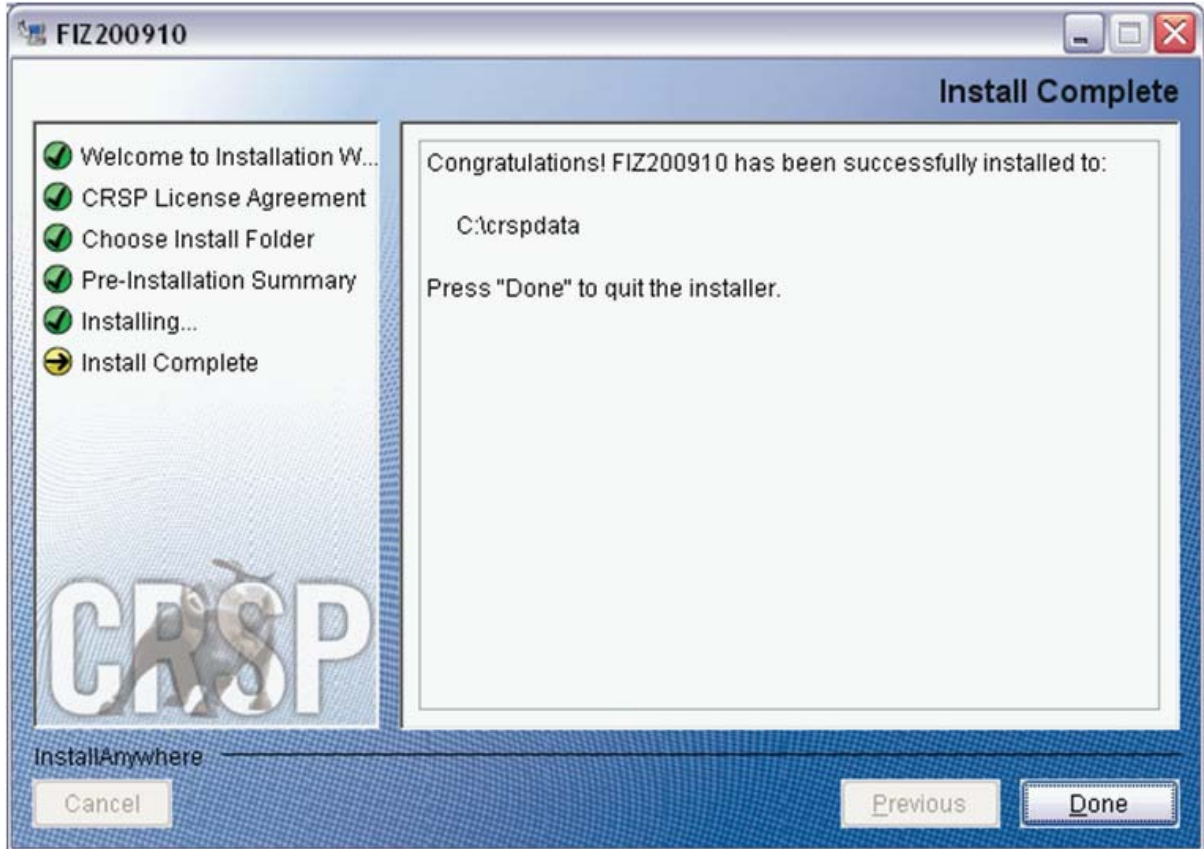
Summary information is displayed: Location, data components and the amount of space that is required for the data. Click on **Install** to proceed.



The screen will display the status of the installation.



A message indicating the success of the installation appears when the process is complete. Click **Done**.



LINUX AND SUN SOLARIS ENVIRONMENT VARIABLES

Important Change for Sun Solaris & Linux Installations:

Following previous installs, the `crsp.kshrc` file was run upon completion to set both environment variables and software alias values. This new version of InstallAnywhere sets the environment variables directly on the system when the software is installed. The `crsp.kshrc` file must still be run to set the aliases.

A user may wish to revert back to a previous cut of data or a previous version of the software. In order to do so, CRSP provides shell scripts for users to run that will create a custom-named `kshrc` file that the user may run to set environment variables at the session level. This process also provides a way for a system administrator to create a script that can be put into the system login process so that the environment variables are seen by all users.

To use a shell script for generating an initialization script file, follow these steps:

1. `cd` to the root directory where program files have been loaded.

```
cd accbin
```

2. If you are running `cs` shell, enter

```
source crsp_setup.csh
```

If you are running `ksh` or `bash` shell, enter

```
./ crsp_setup.sh
```

- The script will prompt for data, root, and log directories. Follow the instructions on the prompts in terms of trailing slashes in directory names.

The script will create new scripts, `mycrsp.cshrc` in `csh` or `mycrsp.kshrc` in `ksh`. `mycrsp` is the default that may be changed.

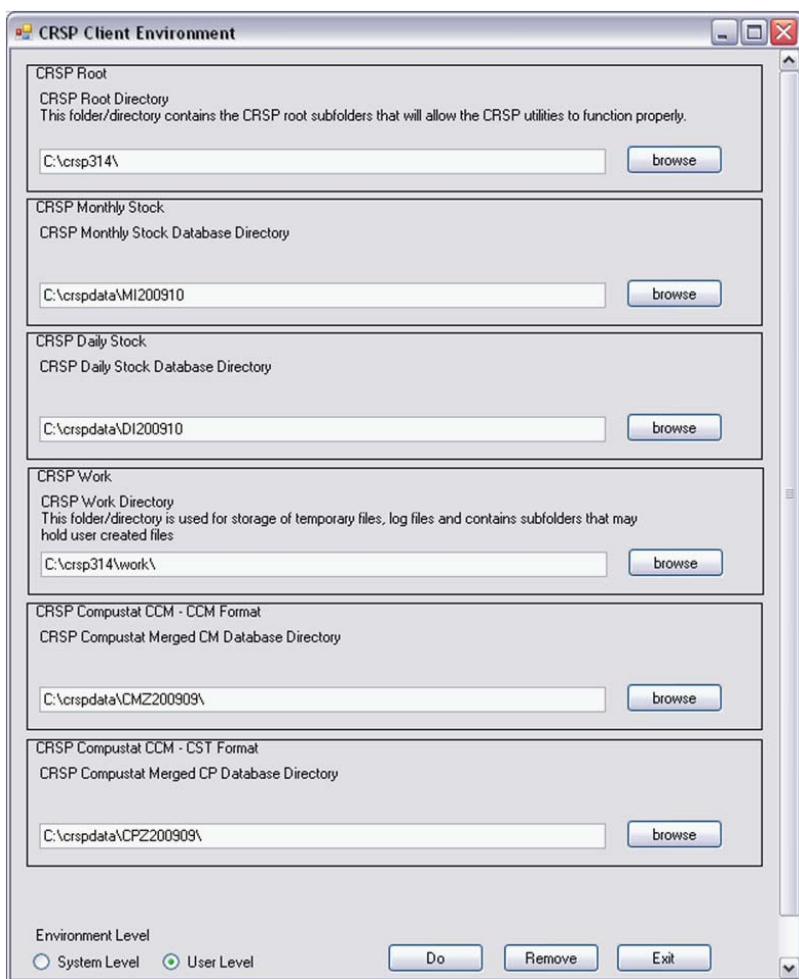
Note: When creating a custom `kshrc` file, be aware that it will overwrite a like-named file if one exists rather than create a new version. The `kshrc` file will overwrite all environment variables, so must be completely filled in.

`env | grep CRSP` can be used to check the CRSP environment variables set.

WINDOWS:

Location of the software and data may be checked by opening CRSP Client Environment from the CRSPAccess menu. This new utility provides users a quick and simple way of both checking and switching environment variables if necessary. Where, in the past, users had to go through the Control Panel to manipulate the environment variables, this can now be done by quick editing of the Client Environment screen.

Note: For subscribers of the CRSP Compustat Merged database, additional CCM database environments will be displayed for the location of the Compustat data.



UNINSTALL

To uninstall the data, go through Start > Control Panel > Add or Remove Programs. The data will appear in the Add or Remove Programs list as the volume label and cut date of the database. For example, the October cut of the 1925 US Stock and Indices Database will be displayed as FIZ200910. Highlight your selection, click on the Change/Remove button and follow the prompts.