

These release notes pertain to the August 2010 Monthly release of the CRSP US Stock and Indices databases.

AUGUST 2010 DATA EDITS

INDIVIDUAL EDITS

PERMNO	COMPANY NAME	BEGIN DATE	END DATE	DESCRIPTION
88659	ADVANCED SEMICONDUCTOR ENGR INC	20100727	20100727	Changed pay dates to 20100910 from 20100729 for both distributions with ex-date 20100727
88659	ADVANCED SEMICONDUCTOR ENGR INC			Name change to ADVANCED SEMICONDUCTOR ENGR INC from ADVANCED SEMICONDUCTOR throughout entire history
85653	ARLINGTON ASSET INVESTMENT CORP	20090102	20100730	Changed sharecode from 18 to 11 for 20090102-present.
76544	ARRHYTHMIA RESEARCH TECH INC	20100210	20100210	Changed distribution code to 1242 from 1232 for distribution on ex-date 20100210.
65509	BELO CORP	20080211	20080211	Corrected ACPERM to 92528 from 925280 and ACCOMP to 52924 from 529240.
89805	CAPITALSOURCE INC	20090102	20100730	Changed sharecode from 18 to 11 for 20090102- present.
88987	GLOBAL POWER EQUIPMENT GROUP INC	20060929	20100810	Added three zero namelines to reflect off-exchange activity from 20060929-20100809
90382	HUTCHISON TELECOMS INTL LTD	20100515	20100517	Changed distribution ex-date from 20100515 to 20100517.
4880	ITAU UNIBANCO HOLDING S A	20090504	20100201	Changed distribution code to 1222 from 1212 for distributions on ex-dates 20090504, 20090803, 20090901, 20091103, 20100104, and 20100201.
88244	KINGOLD JEWELRY INC	20020724	20100817	Added three zero namelines to reflect off-exchange activity for 20020724-20100817.
85616	LAN AIRLINES S A	20090107	20100512	Removed declaration date from distribution with ex-date on 20090107 and changed code to 1212 from 1252 for distribution on ex-date 20100512.
80004	MARINA BIOTECH INC	20100722	20100830	Changed company name to MARINA BIOTECH INC from M D R N A INC and cusip to 56804Q10 from 55276N10 for 20100722-present
92976	PENNYMAC MORTGAGE INV TR	20090730	20100730	Changed sharecode from 18 to 48 from 20090730 to present.
86756	PEPSI BOTTLING GROUP INC	20100303	20100303	Removed distribution on ex-date 20100303
84116	SOUTHBANC SHARES INC	20091211	20091211	Removed distribution on ex-date 20091211
89818	TRIARC COMPANIES INC	20080326	20080326	Corrected ACPERM to 90752 from 907520 and ACCOMP to 46875 from 468750.

FILE VERSION SPECIFICS

This table contains version specific information for the CRSP Stock Files with data ending August 2010. It contains the number of securities and information about the maximums of the event arrays.

FILE CODE	# OF SECURITIES	MAX NAMES	MAX DISTS	MAX SHARES	MAX DELISTS	MAX GROUPS	MAX NASDIN	FIRST PERMNO	LAST PERMNO
DAZ	28512	39	1223	834	1	4	2155	10000	93436
MAZ	28482	39	1223	834	1	4	2155	10000	93436

CALENDAR	DATE RANGE	DATE INDEX RANGE
Daily trading calendar	19251231-20100831	1-22444
Month-end trading calendar	19251231-20100831	1-1017
Year-end trading calendar	19251231-20111230	1-87
Quarter-end trading calendar	19251231-20111230	1-345
Weekly trading calendar	19260102-20100831	1-4418

CRSPACCESS PRODUCT INFORMATION

To simplify installation for our subscribers, data are bundled into product groups. Information relevant to each product group is listed.

PRODUCT NAME	DATABASE	MEDIA	SIZE	INDICES	PORTFOLIOS	COMPONENTS & DESCRIPTION
CRSP 1925 US Stock with Indices	FIZyyyymm	DVD	3.6 GB	All CRSP indices and portfolio assignments	All portfolios	DI - 1925 Daily US Stock & Indices MI - 1925 Monthly US Stock & Indices IF - CRSP Supplemental US Indices
CRSP 1925 US Stock	FAZyyyymm	DVD	3.2 GB	CRSP NYSE/ AMEX/ NASDAQ Value-weighted Market, CRSP NYSE/ AMEX/ NASDAQ Equal-weighted Market, S&P 500 Composite, NASDAQ Composite	NYSE/ AMEX/ NASDAQ Capitalization Deciles	DA - 1925 Daily US Stock MA - 1925 Monthly US Stock IN - CRSP Limited US Indices
CRSP 1962 US Stock	A6Zyyyymm	DVD	2.8 GB	CRSP NYSE/ AMEX/ NASDAQ Value-weighted Market, CRSP NYSE/ AMEX/ NASDAQ Equal-weighted Market, S&P 500 Composite, NASDAQ Composite	NYSE/ AMEX/ NASDAQ Capitalization Deciles	D6 - 1962 Daily US Stock M6 - 1962 Monthly US Stock IN - CRSP Limited US Indices
CRSP 1962 US Stock with Indices	AXZyyyymm	DVD	3.1 GB	See FIZ	All portfolios	DX - 1962 Daily US Stock & Indices MX - 1962 Monthly US Stock & Indices IF - CRSP Supplemental US Indices
CRSP 1925 US Indices	IFZyyyymm	DVD	113 MB			IF - CRSP Supplemental US Indices
Daily & Monthly Treasuries	TRZyyyymm	DVD	142 MB			TRZ - Daily and Monthly Treasuries
Daily Treasuries	BDZyyyymm	DVD	980 MB			BD - Daily Treasuries
Monthly Treasuries	BMZyyyymm	DVD	91.7 MB			BM - Monthly Treasuries
Mutual Fund Database	MFZyyyymm	DVD	4.7 GB			MF - Mutual Funds
CRSP/Ziman Daily & Monthly REIT	RAZyyyymm	DVD	164 MB			RD - Daily REITs RM - Monthly REITs
CRSP/Ziman Monthly REIT	RMZyyyymm	DVD	8 MB			RM - Monthly REITs

Instructions and screen shots for installation are written for Windows. Differences related to Linux and Sun or media are noted.

WINDOWS:

To install data, insert your DVD into the drive and from the Start Menu, select Run d:\setupwin32.exe. Click OK.

SUN SOLARIS (DVD INSTALL):

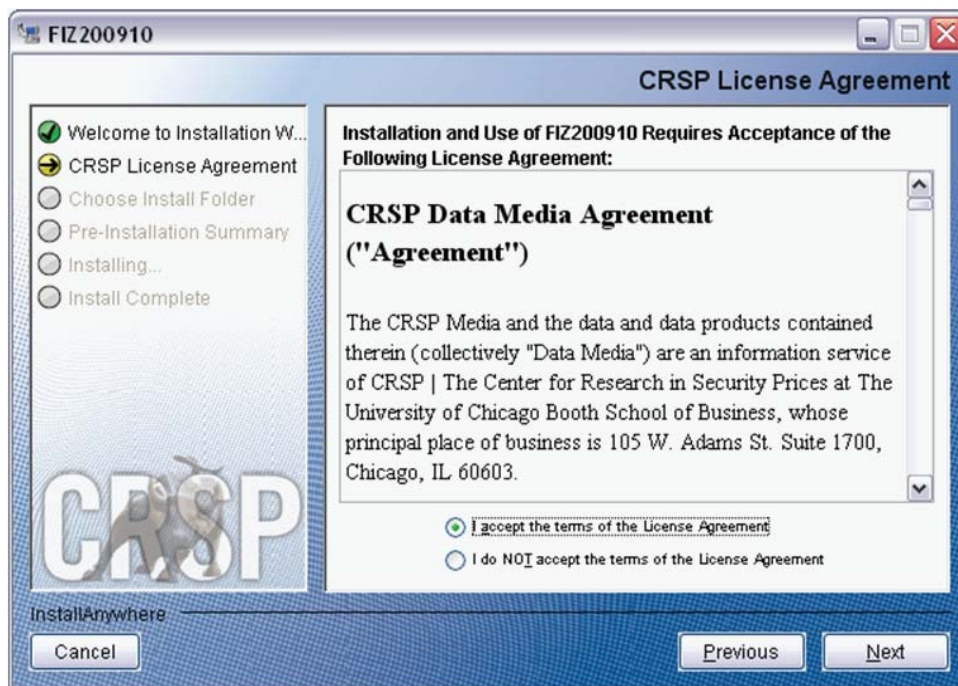
After inserting the DVD, a file manager will open with the file, setupsolaris.bin. Double click on this setup file to begin the installation process.

LINUX(DVD INSTALL):

Upon insertion of the DVD, a file manager will open with the file, setuplinux.bin. Double click on this setup file to begin the installation process.



After clicking on **Next** on the Welcome screen, scroll through and read the CRSP Data and Utilities Agreement. Click to accept the terms of the license agreement. Click **Next**.



WINDOWS: The default directory for the data installation is `c:\crspdata`. You may accept or modify it. Click **Next**.

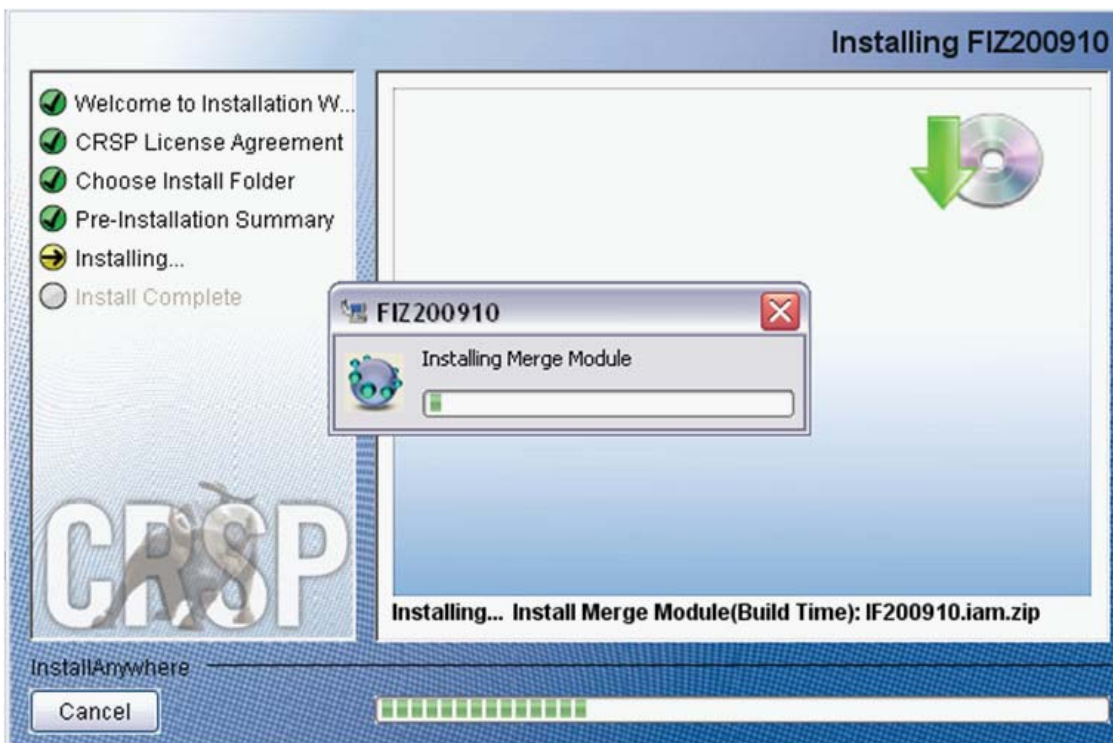
SUN SOLARIS & LINUX: The default directory for the data installation is `/crspdata`. You must have write permission to the directory you specify, for example, `/home/username/crspdata`.



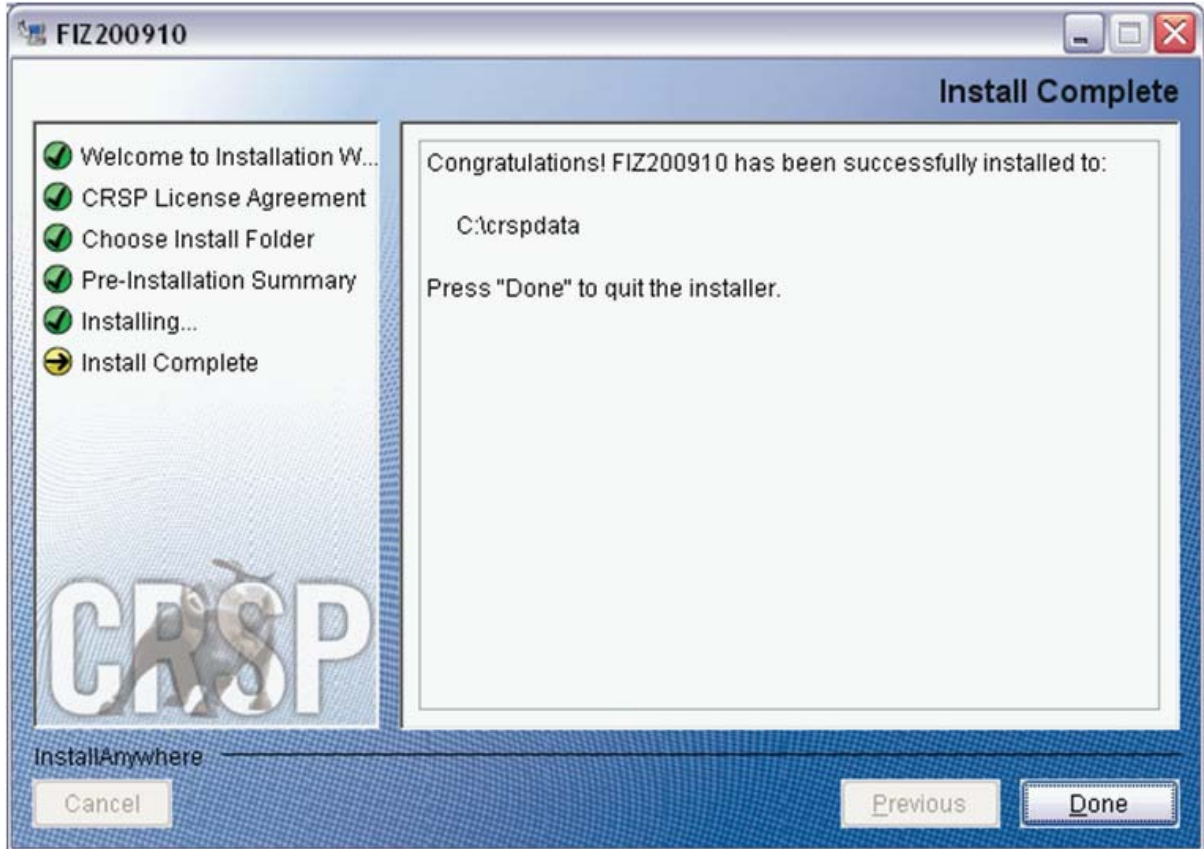
Summary information is displayed: Location, data components and the amount of space that is required for the data. Click on **Install** to proceed.



The screen will display the status of the installation.



A message indicating the success of the installation appears when the process is complete. Click **Done**.



LINUX AND SUN SOLARIS ENVIRONMENT VARIABLES

Important Change for Sun Solaris & Linux Installations:

Following previous installs, the `crsp.kshrc` file was run upon completion to set both environment variables and software alias values. This new version of InstallAnywhere sets the environment variables directly on the system when the software is installed. The `crsp.kshrc` file must still be run to set the aliases.

A user may wish to revert back to a previous cut of data or a previous version of the software. In order to do so, CRSP provides shell scripts for users to run that will create a custom-named `kshrc` file that the user may run to set environment variables at the session level. This process also provides a way for a system administrator to create a script that can be put into the system login process so that the environment variables are seen by all users.

To use a shell script for generating an initialization script file, follow these steps:

1. `cd` to the root directory where program files have been loaded.

```
cd accbin
```

2. If you are running `cs` shell, enter

```
source crsp_setup.csh
```

If you are running `ksh` or `bash` shell, enter

```
./ crsp_setup.sh
```

- 3. The script will prompt for data, root, and log directories. Follow the instructions on the prompts in terms of trailing slashes in directory names.

The script will create new scripts, `mycrsp.cshrc` in `csh` or `mycrsp.kshrc` in `ksh`. `mycrsp` is the default that may be changed.

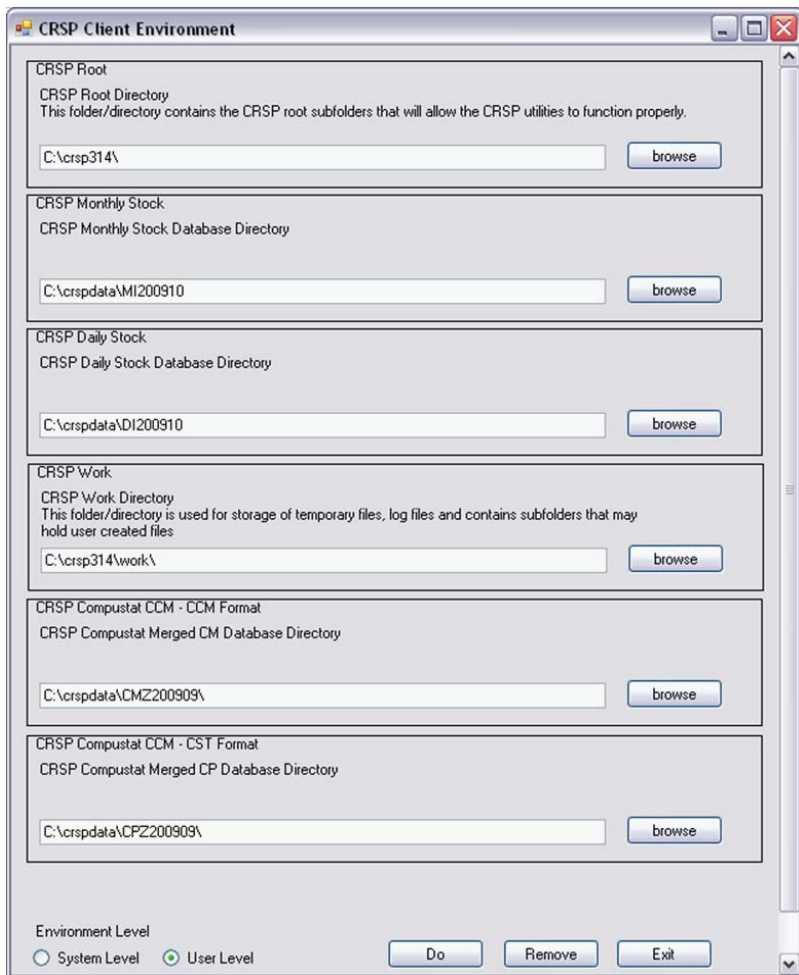
Note: When creating a custom `kshrc` file, be aware that it will overwrite a like-named file if one exists rather than create a new version. The `kshrc` file will overwrite all environment variables, so must be completely filled in.

`env | grep CRSP` can be used to check the CRSP environment variables set.

WINDOWS:

Location of the software and data may be checked by opening CRSP Client Environment from the CRSPAccess menu. This new utility provides users a quick and simple way of both checking and switching environment variables if necessary. Where, in the past, users had to go through the Control Panel to manipulate the environment variables, this can now be done by quick editing of the Client Environment screen.

Note: For subscribers of the CRSP Compustat Merged database, additional CCM database environments will be displayed for the location of the Compustat data.



UNINSTALL

To uninstall the data, go through Start > Control Panel > Add or Remove Programs. The data will appear in the Add or Remove Programs list as the volume label and cut date of the database. For example, the October cut of the 1925 US Stock and Indices Database will be displayed as FIZ200910. Highlight your selection, click on the Change/Remove button and follow the prompts.