

# CRSP SAMPLE DATA & SOFTWARE GUIDE

**CHICAGO BOOTH** 

---

**CRSP**<sup>®</sup>  
Center for Research in Security Prices

105 West Adams, Suite 1700  
Chicago, IL 60603  
Tel: 312.263.6400  
Fax: 312.263.6430  
Email: [Support@crsp.ChicagoBooth.edu](mailto:Support@crsp.ChicagoBooth.edu)

# CRSP SAMPLE DATA AND SOFTWARE GUIDE

## GETTING STARTED

CRSP provides two sample products. The data you are interested in viewing will determine which sample(s) you use. These comprehensive snapshots of CRSP data are for promotional purposes only. Data items are intended to be previewed internally and used for purposes of evaluating as a potential resource.

### **CRSPSIFT SAMPLE**

The CRSPSift Sample uses our Windows-based interface to access data products that can be accessed through CRSPSift:

- CRSP Stock & Index Databases
- CRSP/Compustat Merged Database
- CRSP US Treasuries Database
- CRSP US Survivor-Bias-Free Mutual Fund Database

The CRSPSift Sample is a “hosted solution” that provides remote access to a copy of the application residing at CRSP. Usernames and passwords are provided by CRSP.

The CRSPSift Sample can be accessed from a Windows-based computer with XP Service Pack 3, and Windows 7 operating systems.

### **CRSP EMAIL SAMPLES**

Samples for the Cap-Based Portfolios, the Mutual Fund, and REIT databases can be sent via email.

Contact [subscriptions@crsp.chicagobooth.edu](mailto:subscriptions@crsp.chicagobooth.edu) or call CRSP Subscriptions at 312-263-6400, Option 1 to request samples.

## BEYOND THE SAMPLES

In addition to using CRSPSift through Windows, CRSP data products are available to subscribers who have Linux and Solaris operating systems through our CRSPAccess tools. Platform and version support information are found on our website at <http://www.crsp.chicagobooth.edu/support/access.html>.

CRSPAccess includes command-line access utilities for Stock and CRSP/Compustat Merged databases on Linux and Solaris as well as library files that support C-programming, Fortran 95, and SAS access through the SASECRSP engine on all three platforms. ASCII and SAS Treasury files are available to Linux and Solaris subscribers.

## QUICK TOUR

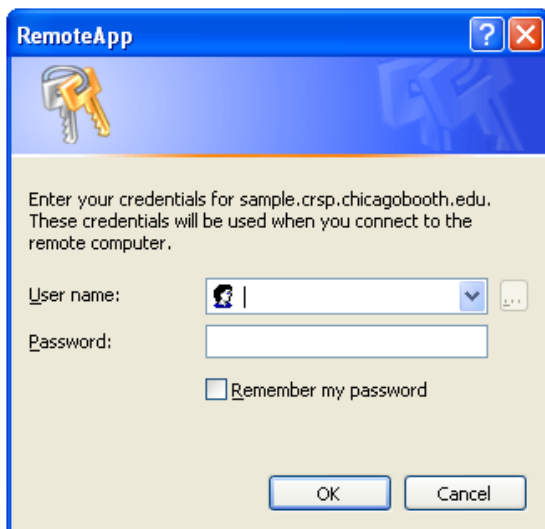
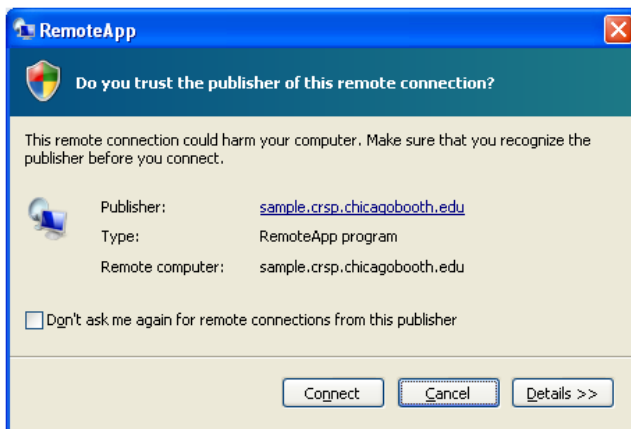
The following sample data products are available with date range and relevant universes.

DATA PRODUCT	UNIVERSE	DATE AVAILABILITY
1925 US Stock with Indexes	25 securities, index subset	Securities: full history through December 2012; Indexes: one year - 2012
CRSP/Compustat Merged Database	25 securities corresponding to those on the CRSP US Stock and Indexes database	Full history through December 2012
Daily & Monthly CRSP US Treasury Data	433 issues 88 aggregate issues	Daily: six months ending December 2012; Monthly: one year ending December 2012
CRSP Survivor-Bias-Free US Mutual Fund Database	50 funds	Full history through December 2012
Daily & Monthly CRSP/ Ziman Real Estate Data Series	10 securities, 6 indexes	Two years ending December 2012

## CRSP ONLINE SAMPLE

The CRSP Online Sample requires no installation. The sample is accessed through a remote connection to a server at CRSP.

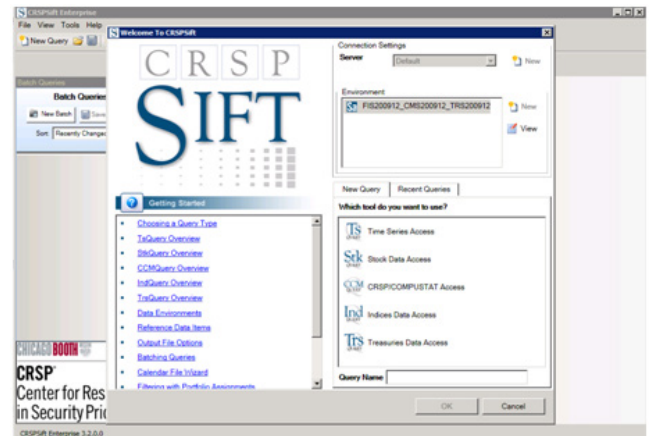
Open the CRSP\_Online\_Sample.rdp file to launch the connection for which you will be required to supply a username and password that is issued to you by CRSP.



If you do not have a username and password and would like to access Stock, Index, CRSP/Compustat Merged, or Treasuries databases, use the online form at CRSP at <http://www.crsp.chicagobooth.edu/sample> or call Subscriptions at 312-263-6400, Option 1.

Launching the sample opens CRSPSift, CRSP's interface for Windows. Sift will allow you to access samples of the Stock and Index, CRSP/Compustat Merged, and CRSP US Treasuries databases.

The Welcome Screen is the first Sift window that appears after starting the program. Tutorials listed under Getting Started will give you a quick tour of the tools and how they are used. The Data environment identifies the sample databases and the year and month end-date of the data. The tools are those that are available for use with the environment. Select a tool and then click the OK button to open it.



For more information about using CRSPSift, see the CRSPSift User Guide. It can be retrieved by going to **Help > Contents** on the menu bar, or to <http://www.crsp.chicagobooth.edu/documentation.index>.

## UNIVERSES USED FOR SAMPLE DATABASES

### SAMPLE STOCK UNIVERSE

The stock universe used for the CRSP Stock and Index databases and CRSP/Compustat Merged database is made up of 25 issues – 25 unique PERMNOs and 25 unique GVKEYs.

Note that a security that does not have a PERMNO will not be accessed through TsQuery, for it relies solely on linking to PERMNO. Compustat data for those securities may be accessed using GVKEYS in CCMQuery. Securities with PERMNOs may be accessed through any CRSP utility.

HCOMNAM	KYPERMNO	CUSIP	GVKEY	IID	TICKER (LATEST CRSP)
ALLSTATE CORP	79323	02000210	28349	01	ALL
CONEXANT SYSTEMS INC	86496	20714230	116526	01	CNXT
DEAN WITTER DISCOVER & CO	78946	24240V10	27867	01	DWD
DEVON ENERGY CORP	75390	25179910	14934	01	DVN
DEVON ENERGY CORP NEW	87137	25179M10	14934	01	DVN
DEVON ENERGY CORP-PRO FORMA		25199Y93	137190	00X	
DIRECTV	89954	25490A30	12206	01	DTV
ELECTRONIC DATA SYS CORP	52070	28565910	5074	02	EDS
ELECTRONIC DATA SYS CORP NEW	83596	28566110	5074	01	EDS
GENERAL MOTORS CORP	12079	37044210	5073	01/01C	GM
GENERAL MOTORS CORP	66931	37044240	5074	01	GME
GENERAL MOTORS CORP	68451	37044283	12206	01	GMH
GENERAL MOTORS CORP-PRE FASB		37099Z93	20355	00X	
INTERNATIONAL BUSINESS MACHS COR	12490	45920010	6066	01	IBM
IVAX CORP	75228	46582310	14446	01	IVX
KEYSPAN CORP	24360	49337W10	6799	01	KSE
KEYSPAN ENERGY CORP	10823	49337510	2424	01	KSE
MARATHON OIL CORP	15069	56584910	7017	01	MRO
MERITOR INC	85349	59001K10	65399	01	MTOR
MICROSOFT CORP	10107	59491810	12141	01	MSFT
NABISCO GROUP HOLDING CORP	76597	62952P10	9113	01	NGH
NABISCO HOLDINGS CORP	81191	62952610	31427	01	NA
R J R NABISCO INC	14218	74960L10	28701	01	RJR
RALSTON CONTINENTAL BAKING GROUP	79348	75126210	8935	01	CBG
RALSTON PURINA CO	28353	75127730	28454	01	RAL
ROCKWELL AUTOMATION INC	84381	77390310	9203	01	ROK
ROCKWELL INTERNATIONAL CORP	18948	77434710	9203	01	ROK
SEARS ROEBUCK & CO	14322	81238710	9563	01	S
USX CORP-CONSOLIDATED		90399Y93	10970	02	

## SAMPLE INDEXES INCLUDED IN THE CRSP US STOCK AND INDEX DATABASES

KYINDNO	INDNAME
1000080	CRSP NYSE/NYSEMKT/Nasdaq Value-Weighted Market Index
1000081	CRSP NYSE/NYSEMKT/Nasdaq Equal-Weighted Market Index
1000082	CRSP NYSE/NYSEMKT/Nasdaq Market Capitalization Decile 1
1000083	CRSP NYSE/NYSEMKT/Nasdaq Market Capitalization Decile 2
1000084	CRSP NYSE/NYSEMKT/Nasdaq Market Capitalization Decile 3
1000085	CRSP NYSE/NYSEMKT/Nasdaq Market Capitalization Decile 4
1000086	CRSP NYSE/NYSEMKT/Nasdaq Market Capitalization Decile 5
1000087	CRSP NYSE/NYSEMKT/Nasdaq Market Capitalization Decile 6
1000088	CRSP NYSE/NYSEMKT/Nasdaq Market Capitalization Decile 7
1000089	CRSP NYSE/NYSEMKT/Nasdaq Market Capitalization Decile 8
1000090	CRSP NYSE/NYSEMKT/Nasdaq Market Capitalization Decile 9
1000091	CRSP NYSE/NYSEMKT/Nasdaq Market Capitalization Decile 10
1000502	S&P 500 Composite
1000503	Nasdaq Composite

## SAMPLE UNIVERSE FOR THE CRSP SURVIVOR-BIAS-FREE US MUTUAL FUND DATABASE

KYCRSP_FUNDNO	FFUND_NAME
567	EUROPEAN EMERGING COMPANIES FUND
1665	NEWTON INCOME FUND
2801	Aston Funds: ASTON/Cornerstone Large Cap Value Fund; Class N Shares
4208	AllianceBernstein Municipal Income Fund, Inc: AllianceBernstein California Portfolio II; Class A Shares
7020	Calvert Municipal Fund, Inc: Calvert California Limited-Term Municipal Fund; Class A Shares
7211	Cash Trust Series II: Municipal Cash Series II
7428	Columbia Funds Trust V: Columbia Small Company Index Fund; Class Z Shares
7560	Columbia Funds Series Trust: Columbia Asset Allocation Fund II; Class A Shares
7685	Columbia Funds Series Trust I: Columbia Massachusetts Tax-Exempt Fund; Class B Shares
7692	Columbia Funds Series Trust I: Columbia Utilities Fund; Class B Shares
8714	DWS Value Builder Fund; Class A Shares
8782	Davis Series, Inc: Davis Government Money Market Fund; Class C Shares
8783	Davis Series, Inc: Davis Government Money Market Fund; Class B Shares
10163	Eaton Vance Municipals Trust: Eaton Vance Tennessee Municipal Income Fund; Class B Shares
10991	Federated Global Allocation Fund; Class A Shares
11971	Fidelity Municipal Trust: Fidelity Pennsylvania Municipal Income Fund
12053	Fidelity Select Portfolios: Transportation Portfolio
12056	Fidelity Select Portfolios: Construction & Housing Portfolio
12067	Fidelity Select Portfolios: Gold Portfolio
12397	First American Investment Funds, Inc: Balanced Fund; Class A Shares
12628	First Investors Tax Exempt Funds: Florida Insured Tax Exempt Fund; Class B Shares
13092	Franklin Tax-Free Trust: Franklin Virginia Tax-Free Income Fund; Class C Shares
15124	Eagle Growth & Income Fund; Class C Shares
18597	Lord Abbett Municipal Income Fund, Inc: Texas Tax-Free Income Fund; Class A Shares
19232	MFS Series Trust I: MFS Cash Reserve Fund; Class A Shares
20690	Money Market Obligations Trust: Federated US Treasury Cash Reserves; Institutional Shares
20888	Morgan Stanley Income Builder Fund; Class C Shares
21477	JP Morgan Funds: JPMorgan Equity Income Fund; Select Shares
21710	Nationwide Mutual Funds: Nationwide Government Bond Fund; Institutional Service Class Shares

KYCRSP_FUNDNO	FFUND_NAME
23716	UBS RMA Money Fund, Inc: UBS RMA Money Market Portfolio
24188	Virtus Opportunities Trust: Virtus Real Estate Securities Fund; Class B Shares
24189	Virtus Opportunities Trust: Virtus Real Estate Securities Fund; Class A Shares
25279	Principal Investors Fund, Inc: Equity Income Fund; Class B Shares
26335	Quantitative Group of Funds: Mid Cap Fund; Institutional Shares
26360	RBB Fund, Inc: Money Market Portfolio; Bedford Shares
26362	RBB Fund, Inc: Money Market Portfolio; Sansom Street Shares
27637	RidgeWorth Funds: Prime Quality Money Market Fund; Class I Shares
27676	RidgeWorth Funds: Tax-Exempt Money Market Fund; Class A Shares
27697	RidgeWorth Funds: Large Cap Growth Stock Fund; Class A Shares
27698	RidgeWorth Funds: Large Cap Growth Stock Fund; Class I Shares
27822	SSgA Funds: SSgA US Treasury Money Market Fund
28382	Seligman Communications & Information Fund, Inc; Class D Shares
29550	TD Asset Management USA Funds Inc: TDAM US Government Portfolio; Investor Class Shares
31565	Wilmington Funds: Wilmington US Treasury Money Market Fund; Select Class Shares
31598	Voyageur Investment Trust: Delaware Tax-Free California Insured Fund; Class A Shares
31619	Voyageur Investment Trust: Delaware Tax-Free California Insured Fund; Class C Shares
31916	Waddell & Reed Advisors Funds: Waddell & Reed Advisors Continental Income Fund; Class A Shares
31920	Waddell & Reed Advisors Funds: Waddell & Reed Advisors International Growth Fund; Class A Shares
31983	Weitz Funds: Short-Intermediate Income Fund; Institutional Class Shares
34870	Pilot Missouri Short Term Tx Ex/Pilot Inv

### SAMPLE UNIVERSE FOR THE CRSP/ZIMAN REAL ESTATE DATA SERIES

COMPANY NAME	PERMNO	TICKER (LATEST CRSP)
<b>SECURITIES:</b>		
POTLATCH CORP NEW	49744	PCH
U D R INC	59300	UDR
HEALTH CARE REIT INC	65947	HCN
DYNEX CAPITAL INC	75269	DX
PACIFIC OFFICE PPTYS TRUST INC	75284	PCE
PLUM CREEK TIMBER CO INC	75592	PCL
REGENCY CENTERS CORP	79782	REG
W P CAREY INC	85763	WPC
RESOURCE CAPITAL CORP	91119	RSO
STARWOOD PROPERTY TRUST INC	92999	STWD
<b>INDEXES:</b>		
	<b>INDNO</b>	
CRSP Ziman REIT Value Weighted Index	1000800	
CRSP Ziman Equity REIT Value Weighted Index	1000801	
CRSP Ziman Residential Ptype REIT Value Weighted Index	1000811	
CRSP Ziman REIT Equal Weighted Index	1000850	
CRSP Ziman Equity REIT Equal Weighted Index	1000851	
CRSP Ziman Residential Ptype REIT Equal Weighted Index	1000861	

**INDIVIDUAL TREASURY ISSUES FOR  
USE WITH TRS201212**

KYTREASNO	CRSPID
204000	20120115.201120
204001	20120131.204750
204002	20120215.201370
204003	20120215.204870
204004	20120229.204620
204005	20120331.204500
204006	20120430.204500
204007	20120531.204750
204008	20120630.204870
204009	20120731.204620
204010	20120815.204370
204011	20120831.204120
204012	20120930.204250
204013	20121031.203870
204014	20121115.204000
204016	20121130.203370
204017	20121231.203620
204018	20130131.202870
204019	20130215.203870
204020	20130228.202750
204021	20130331.202500
204022	20130430.203120
204023	20130515.203620
204024	20130531.203500
204025	20130630.203370
204026	20130731.203370
204027	20130815.204250
204029	20130831.203120
204030	20130930.203120
204031	20131031.202750
204032	20131115.204250
204033	20131130.202000
204034	20131231.201500
204035	20140131.201750
204036	20140215.204000
204037	20140515.204750
204039	20140815.204250
204041	20141115.204250
204043	20150215.111250
204044	20150215.204000
204045	20150515.204120
204046	20150815.110620
204047	20150815.204250
204048	20151115.109870

KYTREASNO	CRSPID
204049	20151115.204500
204050	20160215.109250
204051	20160215.204500
204052	20160515.107250
204053	20160515.205120
204054	20160815.204870
204055	20161115.107500
204056	20161115.204620
204057	20170215.204620
204058	20170515.108750
204059	20170515.204500
204060	20170815.108870
204061	20170815.204750
204062	20171115.204250
204063	20180215.203500
204064	20180515.109120
204065	20180515.203870
204066	20180815.204000
204067	20181115.109000
204068	20181115.203750
204069	20190215.108870
204070	20190215.202750
204071	20190815.108120
204072	20200215.108500
204073	20200515.108750
204074	20200815.108750
204075	20210215.107870
204076	20210515.108120
204077	20210815.108120
204078	20211115.108000
204079	20220815.107250
204080	20221115.107620
204081	20230215.107120
204082	20230815.106250
204083	20241115.107500
204084	20250215.107620
204085	20250815.106870
204086	20260215.106000
204087	20260815.106750
204088	20261115.106500
204089	20270215.106620
204090	20270815.106370
204091	20271115.106120
204092	20280815.105500
204093	20281115.105250
204094	20290215.105250

KYTREASNO	CRSPID
204095	20290815.106120
204096	20300515.106250
204097	20310215.105370
204098	20360215.104500
204099	20370215.104750
204100	20370515.105000
204101	20380215.104370
204102	20380515.104500
204103	20390215.103500
206036	20120315.201370
206037	20120415.201370
206038	20120515.201370
206039	20120615.201870
206040	20120715.201500
206041	20120815.201750
206042	20140228.201870
206043	20140331.201750
206044	20140430.201870
206045	20140531.202250
206046	20140630.202620
206047	20140731.202620
206048	20140831.202370
206049	20160229.202620
206050	20160331.202370
206051	20160430.202620
206052	20160531.203250
206053	20160630.203250
206054	20160731.203250
206055	20160831.203000
206056	20190515.203120
206057	20190815.203620
206058	20390515.104250
206059	20390815.104500
206066	20120915.201370
206067	20140930.202370
206068	20160930.203000
206074	20121015.201370
206075	20141031.202370
206076	20161031.203120
206082	20121115.201370
206083	20141130.202120
206084	20161130.202750
206085	20191115.203370
206086	20391115.104370
206093	20121215.201120
206094	20141231.202620



KYTREASNO	CRSPID
206095	20161231.203250
206099	20120131.200870
206100	20130115.201370
206101	20150131.202250
206102	20170131.203120
206107	20120229.200870
206108	20130215.201370
206109	20150228.202370
206110	20170228.203000
206111	20200215.203620
206112	20400215.104620
206119	20120331.201000
206120	20130315.201370
206121	20150331.202500
206122	20170331.203250
206129	20120430.201000
206130	20130415.201750
206131	20150430.202500
206132	20170430.203120
206137	20120531.200750
206138	20130515.201370
206139	20150531.202120
206140	20170531.202750
206141	20200515.203500
206142	20400515.104370
206148	20120630.200620
206149	20130615.201120
206150	20150630.201870
206151	20170630.202500
206157	20120731.200620
206158	20130715.201000
206159	20150731.201750
206160	20170731.202370
206165	20120831.200370
206166	20130815.200750
206167	20150831.201250
206168	20170831.201870
206169	20200815.202620
206170	20400815.103870
206175	20120930.200370
206176	20130915.200750
206177	20150930.201250
206178	20170930.201870
206183	20121031.200370
206184	20131015.200500
206185	20151031.201250

KYTREASNO	CRSPID
206186	20171031.201870
206191	20121130.200500
206192	20131115.200500
206193	20151130.201370
206194	20171130.202250
206195	20201115.202620
206196	20401115.104250
206203	20121231.200620
206204	20131215.200750
206205	20151231.202120
206206	20171231.202750
206210	20120112.400000
206211	20130131.200620
206212	20140115.201000
206213	20160131.202000
206214	20180131.202620
206220	20120209.400000
206221	20130228.200620
206222	20140215.201250
206223	20160229.202120
206224	20180228.202750
206225	20210215.203620
206226	20410215.104750
206231	20120308.400000
206232	20120405.400000
206233	20130331.200750
206234	20140315.201250
206235	20160331.202250
206236	20180331.202870
206240	20120503.400000
206241	20130430.200620
206242	20140415.201250
206243	20160430.202000
206244	20180430.202620
206248	20120531.400000
206249	20130531.200500
206250	20140515.201000
206251	20160531.201750
206252	20180531.202370
206253	20210515.203120
206254	20410515.104370
206259	20120105.400000
206260	20120628.400000
206261	20130630.200370
206262	20140615.200750
206263	20160630.201500

KYTREASNO	CRSPID
206264	20180630.202370
206266	20120119.400000
206267	20120126.400000
206268	20120202.400000
206269	20120726.400000
206270	20130731.200370
206271	20140715.200620
206272	20160731.201500
206273	20180731.202250
206277	20120216.400000
206278	20120223.400000
206279	20120301.400000
206280	20120823.400000
206281	20130831.200120
206282	20140815.200500
206283	20160831.201000
206284	20180831.201500
206285	20210815.202120
206286	20410815.103750
206287	20120315.400000
206288	20120322.400000
206289	20120329.400000
206290	20120920.400000
206291	20130930.200120
206292	20140915.200250
206293	20160930.201000
206294	20180930.201370
206296	20120412.400000
206297	20120419.400000
206298	20120426.400000
206299	20121018.400000
206300	20131031.200250
206301	20141015.200500
206302	20161031.201000
206303	20181031.201750
206304	20120510.400000
206305	20120517.400000
206306	20120524.400000
206307	20121115.400000
206308	20131130.200250
206309	20141115.200370
206310	20161130.200870
206311	20181130.201370
206312	20211115.202000
206313	20411115.103120
206314	20120607.400000

KYTREASNO	CRSPID
206315	20120614.400000
206316	20120621.400000
206317	20120705.400000
206318	20121213.400000
206319	20131231.200120
206320	20141215.200250
206321	20161231.200870
206322	20181231.201370
206323	20120712.400000
206324	20120719.400000
206325	20120802.400000
206326	20130110.400000
206327	20140131.200250
206328	20150115.200250
206329	20170131.200870
206330	20190131.201250
206331	20120809.400000
206332	20120816.400000
206333	20120830.400000
206334	20130207.400000
206335	20140228.200250
206336	20150215.200250
206337	20170228.200870
206338	20190228.201370
206339	20220215.202000
206341	20420215.103120
206342	20120906.400000
206343	20120913.400000
206344	20120927.400000
206345	20121004.400000
206346	20130307.400000
206347	20130404.400000
206348	20140331.200250
206349	20150315.200370
206350	20170331.201000
206351	20190331.201500
206352	20121011.400000
206353	20121025.400000
206354	20121101.400000
206355	20130502.400000
206356	20140430.200250
206357	20150415.200370
206359	20170430.200870
206360	20190430.201250
206361	20121108.400000
206362	20121123.400000

KYTREASNO	CRSPID
206363	20121129.400000
206364	20121206.400000
206365	20130530.400000
206366	20140531.200250
206367	20150515.200250
206368	20170531.200620
206369	20190531.201120
206370	20220515.201750
206371	20420515.103000
206372	20121220.400000
206373	20121227.400000
206374	20130103.400000
206375	20130627.400000
206376	20140630.200250
206377	20150615.200370
206378	20170630.200750
206379	20190630.201000
206436	20130117.400000
206437	20130124.400000
206438	20130131.400000
206441	20130725.400000
206445	20140731.200120
206448	20150715.200250
206456	20170731.200500
206461	20190731.200870
206468	20250115.B02370
206472	20280415.B03620
206473	20290115.B02500
206474	20290415.B03870
206475	20320415.B03370
206476	20400215.B02120
206477	20410215.B02120
206478	20420215.B00750
206480	20260115.B02000
206481	20270115.B02370
206482	20280115.B01750
206491	20120115.C03370
206492	20120415.C02000
206493	20120715.C03000
206494	20130415.C00620
206495	20130715.C01870
206496	20140115.C02000
206497	20140415.C01250
206498	20140715.C02000
206499	20150115.C01620
206500	20150415.C00500

KYTREASNO	CRSPID
206501	20150715.C01870
206502	20160115.C02000
206503	20160415.C00120
206504	20160715.C02500
206505	20170115.C02370
206506	20170415.C00120
206507	20170715.C02620
206508	20180115.C01620
206509	20180715.C01370
206510	20190115.C02120
206511	20190715.C01870
206512	20200115.C01370
206513	20200715.C01250
206514	20210115.C01120
206515	20210715.C00620
206516	20220115.C00120
206517	20220715.C00120
206518	20120917.400000
206519	20130214.400000
206520	20130221.400000
206521	20130228.400000
206522	20130822.400000
206523	20140831.200250
206524	20150815.200250
206525	20170831.200620
206526	20190831.201000
206527	20220815.201620
206528	20420815.102750
206531	20130314.400000
206532	20130321.400000
206533	20130328.400000
206534	20130919.400000
206535	20140930.200250
206536	20150915.200250
206537	20170930.200620
206538	20190930.201000
206539	20130411.400000
206540	20130418.400000
206541	20130425.400000
206542	20131017.400000
206543	20141031.200250
206544	20151015.200250
206546	20171031.200750
206547	20191031.201250
206550	20121214.400000
206551	20121231.400000

KYTREASNO	CRSPID
206552	20130509.400000
206553	20130516.400000
206554	20130523.400000
206555	20130606.400000
206556	20131114.400000
206557	20141130.200250
206558	20151115.200370
206559	20171130.200620
206560	20191130.201000
206561	20221115.201620
206562	20421115.102750
206563	20121217.400000
206564	20130613.400000
206565	20130620.400000
206566	20130705.400000
206567	20131212.400000
206568	20141231.200120
206569	20151215.200250
206570	20171231.200750
206571	20191231.201120

## TREASNOX FOR USE WITH TRS200912

TREASNOX	NAME
<b>RISKFREE</b>	
2000001	CRSP Risk Free Rates - 1-Month (Nominal)
2000002	CRSP Risk Free Rates - 3-Month (Nominal)
<b>FIXED TERM</b>	
2000003	CRSP Fixed Term Index - 1-Year (Nominal)
2000004	CRSP Fixed Term Index - 2-Year (Nominal)
2000005	CRSP Fixed Term Index - 5-Year (Nominal)
2000006	CRSP Fixed Term Index - 7-Year (Nominal)
2000007	CRSP Fixed Term Index - 10-Year (Nominal)
2000008	CRSP Fixed Term Index - 20-Year (Nominal)
2000009	CRSP Fixed Term Index - 30-Year (Nominal)
<b>FAMA TERM STRUCTURE</b>	
2000010	Fama T-Bill 12-Month Term Structure - 1 Month
2000011	Fama T-Bill 12-Month Term Structure - 2 Month
2000012	Fama T-Bill 12-Month Term Structure - 3 Month
2000013	Fama T-Bill 12-Month Term Structure - 4 Month
2000014	Fama T-Bill 12-Month Term Structure - 5 Month
2000015	Fama T-Bill 12-Month Term Structure - 6 Month
2000016	Fama T-Bill 12-Month Term Structure - 7 Month
2000017	Fama T-Bill 12-Month Term Structure - 8 Month
2000018	Fama T-Bill 12-Month Term Structure - 9 Month
2000019	Fama T-Bill 12-Month Term Structure - 10 Month
2000020	Fama T-Bill 12-Month Term Structure - 11 Month
2000021	Fama T-Bill 12-Month Term Structure - 12 Month
2000022	Fama T-Bill 6-Month Term Structure - 1 Month
2000023	Fama T-Bill 6-Month Term Structure - 2 Month
2000024	Fama T-Bill 6-Month Term Structure - 3 Month
2000025	Fama T-Bill 6-Month Term Structure - 4 Month
2000026	Fama T-Bill 6-Month Term Structure - 5 Month
2000027	Fama T-Bill 6-Month Term Structure - 6 Month
<b>FAMA BOND PORTFOLIO RETURN</b>	
2000028	Fama Maturity Portfolios - <= 6 Month
2000029	Fama Maturity Portfolios - > 6 and <= 12 Month
2000030	Fama Maturity Portfolios - > 12 and <= 18 Month
2000031	Fama Maturity Portfolios - > 18 and <= 24 Month
2000032	Fama Maturity Portfolios - > 24 and <= 30 Month
2000033	Fama Maturity Portfolios - > 30 and <= 36 Month
2000034	Fama Maturity Portfolios - > 36 and <= 42 Month
2000035	Fama Maturity Portfolios - > 42 and <= 48 Month
2000036	Fama Maturity Portfolios - > 48 and <= 54 Month
2000037	Fama Maturity Portfolios - > 54 and <= 60 Month
2000038	Fama Maturity Portfolios - > 60 and <= 120 Month
2000039	Fama Maturity Portfolios - > 120 Month
2000040	Fama Maturity Portfolios - <= 12 Month
2000041	Fama Maturity Portfolios - > 12 and <= 24 Month

TREASNOX	NAME
2000042	Fama Maturity Portfolios - > 24 and <= 36 Month
2000043	Fama Maturity Portfolios - > 36 and <= 48 Month
2000044	Fama Maturity Portfolios - > 48 and <= 60 Month
2000045	Reserved
2000046	Reserved
<b>FAMA-BLISS DISCOUNT BONDS</b>	
2000047	Fama Bliss Discount Bonds - 1-Year (Nominal)
2000048	Fama Bliss Discount Bonds - 2-Year (Nominal)
2000049	Fama Bliss Discount Bonds - 3-Year (Nominal)
2000050	Fama Bliss Discount Bonds - 4-Year (Nominal)
2000051	Fama Bliss Discount Bonds - 5-Year (Nominal)
<b>RATES</b>	
2000052	One-month Certificate of Deposit CD1M
2000053	Three-month Certificate of Deposit CD3M
2000054	Six-month Certificate of Deposit CD6M
2000058	Federal Funds Effective(FFEFRT)
2000059	Federal Funds Minimum Trading Range(FFMINR)
2000060	Federal Funds Maximum Trading Range(FFMAXR)
<b>RISKFREE 2</b>	
2000061	CRSP Risk Free - 4 week (Nominal)
2000062	CRSP Risk Free - 13 week (Nominal)
2000063	CRSP Risk Free - 26 week (Nominal)
<b>26-WEEK DAILY/MONTHLY TERM STRUCTURE</b>	
2000064	Fama T-Bill 26-Week Term Structure - 1 Week
2000065	Fama T-Bill 26-Week Term Structure - 2 Week
2000066	Fama T-Bill 26-Week Term Structure - 3 Week
2000067	Fama T-Bill 26-Week Term Structure - 4 Week
2000068	Fama T-Bill 26-Week Term Structure - 5 Week
2000069	Fama T-Bill 26-Week Term Structure - 6 Week
2000070	Fama T-Bill 26-Week Term Structure - 7 Week
2000071	Fama T-Bill 26-Week Term Structure - 8 Week
2000072	Fama T-Bill 26-Week Term Structure - 9 Week
2000073	Fama T-Bill 26-Week Term Structure - 10 Week
2000074	Fama T-Bill 26-Week Term Structure - 11 Week
2000075	Fama T-Bill 26-Week Term Structure - 12 Week
2000076	Fama T-Bill 26-Week Term Structure - 13 Week
2000077	Fama T-Bill 26-Week Term Structure - 14 Week
2000078	Fama T-Bill 26-Week Term Structure - 15 Week
2000079	Fama T-Bill 26-Week Term Structure - 16 Week
2000080	Fama T-Bill 26-Week Term Structure - 17 Week
2000081	Fama T-Bill 26-Week Term Structure - 18 Week
2000082	Fama T-Bill 26-Week Term Structure - 19 Week
2000083	Fama T-Bill 26-Week Term Structure - 20 Week
2000084	Fama T-Bill 26-Week Term Structure - 21 Week
2000085	Fama T-Bill 26-Week Term Structure - 22 Week
2000086	Fama T-Bill 26-Week Term Structure - 23 Week

TREASNOX	NAME
2000087	Fama T-Bill 26-Week Term Structure - 24 Week
2000088	Fama T-Bill 26-Week Term Structure - 25 Week
2000089	Fama T-Bill 26-Week Term Structure - 26 Week

## CONTACT INFORMATION

For more information and support, please contact CRSP at 312-263-6400 or:

Subscriptions: [subscriptions@crsp.ChicagoBooth.edu](mailto:subscriptions@crsp.ChicagoBooth.edu)

Support:  
[support@crsp.ChicagoBooth.edu](mailto:support@crsp.ChicagoBooth.edu)

Website:  
<http://www.crsp.chicagobooth.edu>